

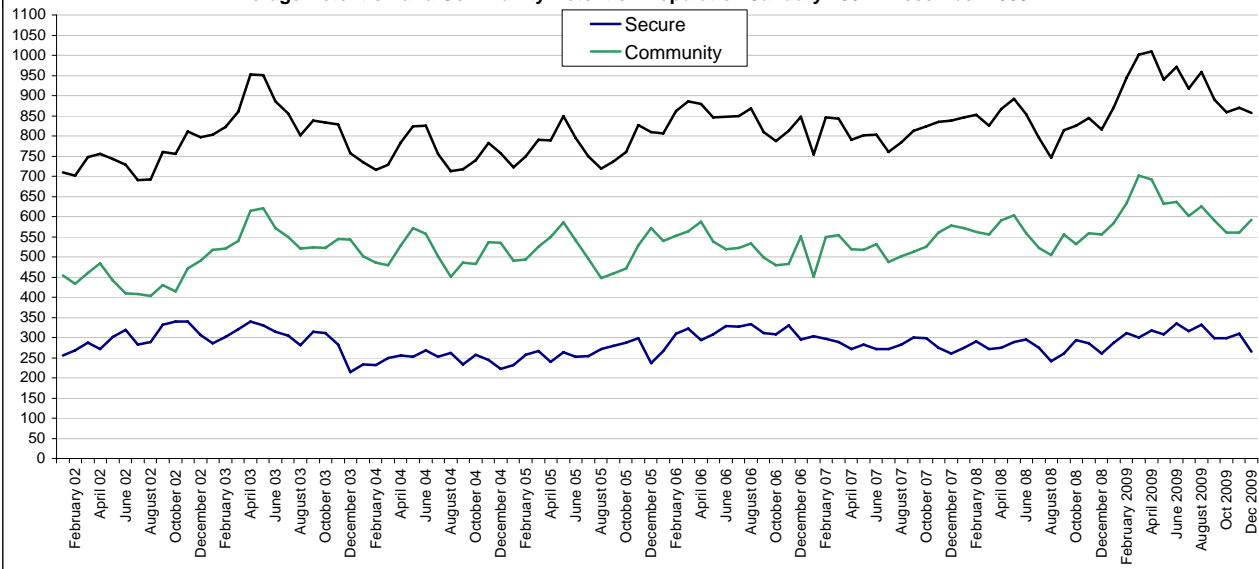
**Maryland Department of Juvenile Services
Monthly Population Report December 2009
Office of Research and Evaluation**

Average Monthly Detention and Community Detention Population, August 2006 - December 2009

(Includes pre-disposition detention population - does not include youth pending placement)

	Secure Detention								Total Secure	Community	Total
	Cheltenham	Hickey	Noyes	Carter	Waxter	BCJJC	W. MD	Lw. Shore			
Dec 2009	56	45	42	6	14	71	19	12	265	592	857
Nov 2009	63	62	43	7	21	82	18	14	310	560	870
Oct 2009	61	66	34	6	19	74	21	17	298	561	859
Sept 2009	62	63	30	7	16	85	20	16	299	591	890
August 2009	72	70	42	9	16	88	20	15	332	626	958
July 2009	61	69	41	9	18	80	21	17	316	602	918
June 2009	73	73	40	8	21	77	22	21	335	636	971
May 2009	64	48	45	7	25	78	20	21	308	631	939
April 2009	68	53	41	9	24	87	16	19	317	692	1009
March 2009	61	42	40	9	24	85	21	18	300	702	1002
February 2009	71	51	43	8	26	81	17	14	311	633	944
January 2009	55	48	33	8	23	82	19	19	287	584	871
December 08	45	42	30	8	20	81	18	17	261	555	816
November 08	57	43	32	10	22	86	18	17	285	559	844
October 08	61	43	34	9	20	89	18	19	293	532	825
September 08	55	34	29	8	18	82	18	16	260	555	815
August 08	52	31	25	9	17	77	15	16	242	504	746
July 08	45	44	28	9	25	85	23	15	274	522	796
June 08	48	45	39	10	21	88	25	19	295	559	854
May 08	58	40	33	9	21	94	17	17	289	603	892
April 08	53	38	35	4	24	89	17	15	275	591	866
March 08	57	39	32	9	23	76	19	16	271	555	826
February 08	53	41	37	8	18	98	22	13	290	562	852
January 08	50	35	34	9	18	98	21	10	275	571	846
December 07	44	32	32	12	21	89	21	10	261	577	838
November 07	51	31	38	11	18	91	23	11	274	561	835
October 07	59	42	42	14	18	95	14	15	299	525	824
September 07	54	45	38	15	18	96	19	15	300	512	812
August 07	40	52	41	16	17	83	23	11	283	501	784
July 07	41	41	44	17	17	76	21	15	272	488	760
June 07	42	37	47	17	18	77	20	13	271	532	803
May 07	52	33	36	19	20	82	27	14	283	518	801
April 07	49	33	36	17	20	84	20	13	272	519	791
March 07	49	42	36	17	23	85	24	13	289	554	843
February 07	56	48	39	21	20	77	21	15	297	549	846
January 07	52	43	44	21	25	78	24	16	303	451	754

Average Detention and Community Detention Population January 2002 - December 2009

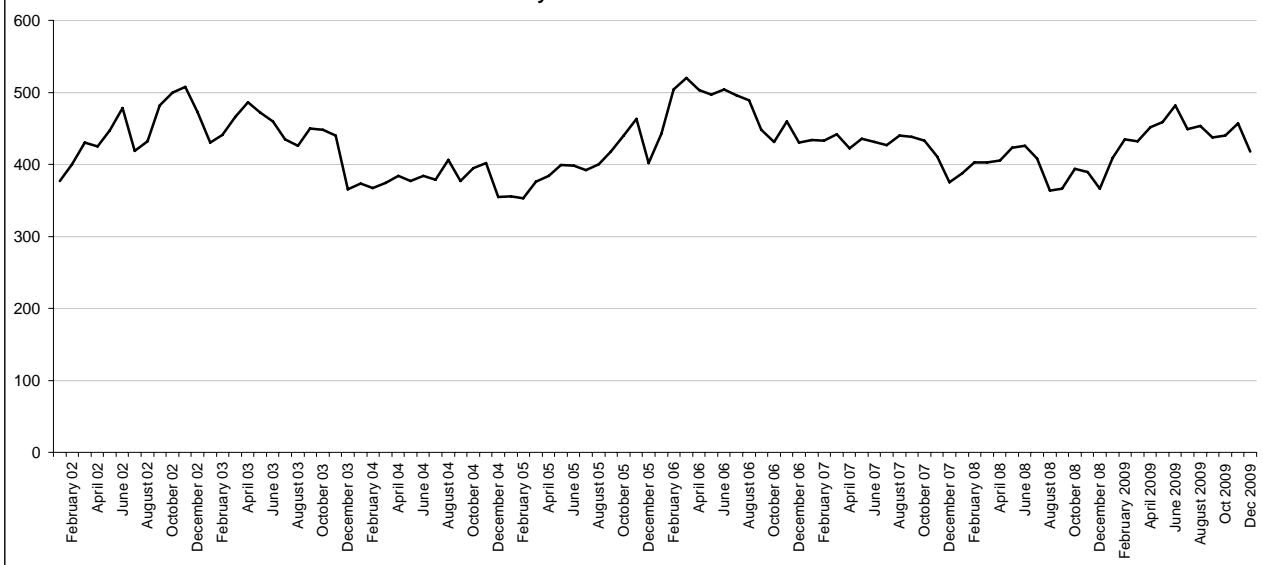


*Community: Community Detention, includes some with Electronic Monitoring, but does not include CD/EM youth pending placement. Also, includes the averages for the Evening Reporting Centers for Baltimore City and Prince Georges (Includes pre-disposition detention population - does not include youth pending placement)

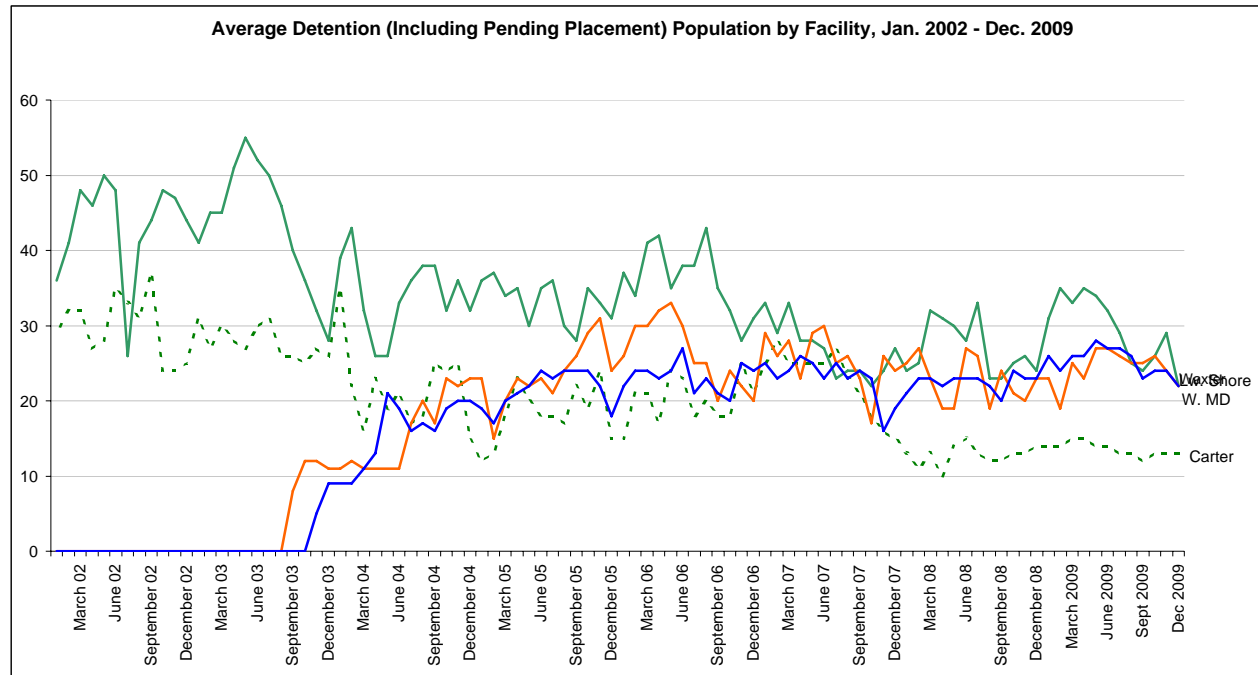
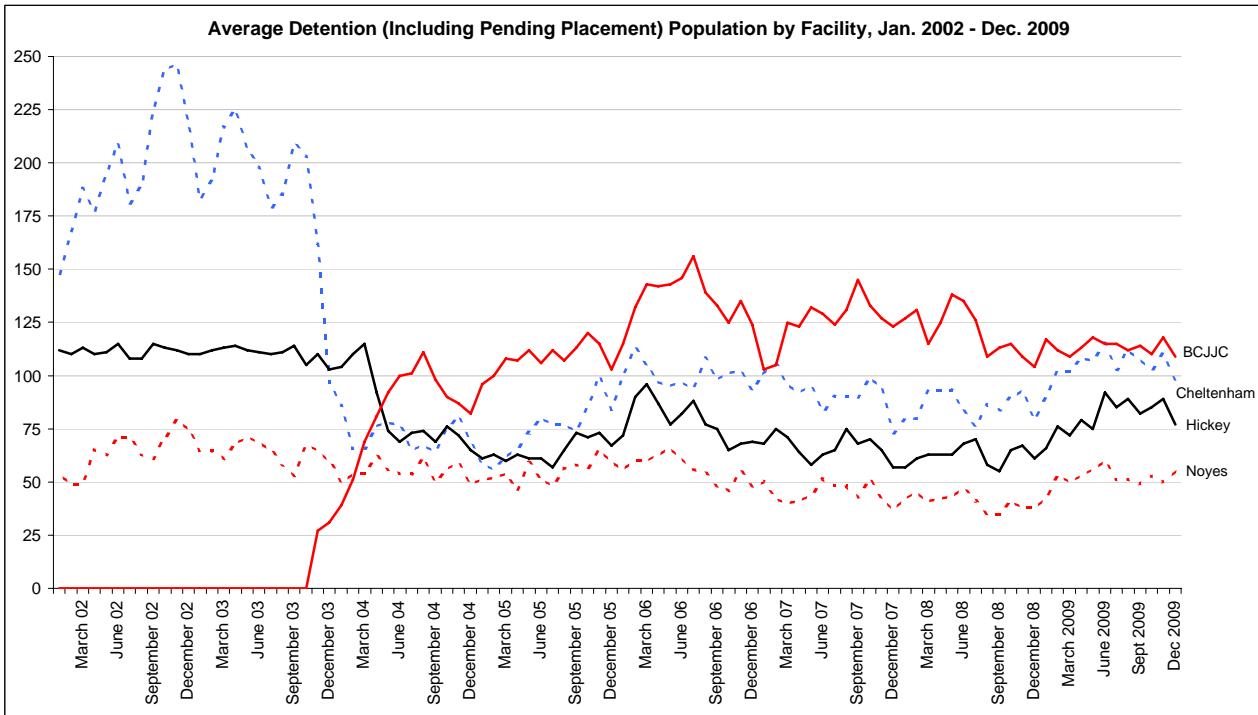
Average Monthly Combined Pending Placement and Detention Population September 2006 - December 2009

	Secure Detention (including Pending Placement youth)								Total Secure
	Cheltenham	Hickey	Noyes	Carter	Waxter	BCJJC	W. MD	Lw. Shore	
Dec 2009	98	77	55	13	22	109	22	22	418
Nov 2009	110	89	50	13	29	118	24	24	457
Oct 2009	103	85	53	13	26	110	26	24	440
Sept 2009	108	82	49	12	24	114	25	23	437
August 2009	112	89	51	13	25	112	25	26	453
July 2009	103	85	51	13	29	115	26	27	449
June 2009	115	92	60	14	32	115	27	27	482
May 2009	107	75	56	14	34	118	27	28	459
April 2009	108	79	53	15	35	113	23	26	452
March 2009	102	72	50	15	33	109	25	26	432
February 2009	102	76	53	14	35	112	19	24	435
January 2009	90	66	42	14	31	117	23	26	409
December 08	79	61	38	14	24	104	23	23	366
November 08	93	67	38	13	26	109	20	23	389
October 08	90	65	41	13	25	115	21	24	394
September 08	84	55	35	12	23	113	24	20	366
August 08	86	58	35	12	23	109	19	22	364
July 08	76	70	41	13	33	126	26	23	408
June 08	83	68	47	15	28	135	27	23	426
May 08	93	63	43	14	30	138	19	23	423
April 08	93	63	42	10	31	125	19	22	405
March 08	93	63	41	13	32	115	23	23	403
February 08	80	61	45	11	25	131	27	23	403
January 08	79	57	42	13	24	127	25	21	388
December 07	73	57	37	15	27	123	24	19	375
November 07	95	65	42	16	24	127	26	16	411
October 07	99	70	51	18	22	133	17	23	433
September 07	90	68	43	21	24	145	23	24	438
August 07	90	75	48	23	24	131	26	23	440
July 07	90	65	48	27	23	124	25	25	427
June 07	83	63	51	25	27	129	30	23	431
May 07	95	58	44	25	28	132	29	25	436
April 07	92	64	41	25	28	123	23	26	422
March 07	96	71	40	25	33	125	28	24	442
February 07	105	75	42	28	29	105	26	23	433
January 07	101	68	50	25	33	103	29	25	434

Overall Average Secure Detention (Including Pending Placement) Population, January 2002 - December 2009



Average Monthly Combined Pending Placement and Detention Population By Facility. September 2006 - December 2009



Average Monthly Pending Placement Population August 2006 - December 2009

NOTE: These data on Pending Placement should be considered a provisional estimated count and not official. Each youth's court order needs to be officially reviewed to determine status. An Official Pending Placement Report is available from the Office of Research and Evaluation.

	Cheltenham	Hickey	Noyes	Carter	Waxter	BCJJC	West. MD.	Lower Shore	Total Residential	* Community	Total
Dec 2009	42	32	13	7	8	38	3	10	153	6	159
Nov 2009	47	27	7	6	8	39	6	10	150	5	155
Oct 2009	42	19	19	7	7	36	5	7	142	5	147
Sept 2009	46	19	19	5	8	29	5	7	138	8	146
August 2009	40	19	9	4	9	33	5	11	130	7	137
July 2009	42	16	10	4	11	38	5	10	136	10	146
June 2009	42	19	20	6	11	38	5	6	147	8	155
May 2009	43	27	11	7	9	40	7	7	151	8	159
April 2009	40	26	11	6	11	27	7	7	135	7	142
March 2009	41	30	10	6	9	24	4	8	132	5	137
February 2009	31	25	9	6	9	31	3	10	124	4	128
January 2009	35	18	9	6	8	35	4	6	121	7	128
December 08	34	19	8	6	4	23	5	6	105	4	109
November 08	36	24	6	3	4	23	2	6	104	4	108
October 08	29	22	7	4	5	26	3	4	100	3	103
September 08	29	21	6	4	5	31	6	5	107	3	110
August 08	34	27	11	3	6	32	4	5	122	5	127
July 08	31	26	13	4	8	41	4	8	135	15	150
June 08	35	24	7	5	7	47	2	4	131	18	149
May 08	35	22	9	6	9	44	2	6	133	17	150
April 08	40	25	7	6	7	36	3	6	130	17	147
March 08	36	24	9	4	9	39	4	7	132	20	152
February 08	27	20	8	3	7	33	5	10	113	17	130
January 08	29	22	7	4	6	29	3	11	111	16	127
December 07	29	25	6	3	6	34	4	9	116	18	134
November 07	44	34	4	5	6	36	3	5	137	14	151
October 07	40	28	8	4	4	39	4	9	136	14	150
September 07	36	23	6	6	6	46	4	9	136	16	152
August 07	43	23	6	6	7	48	4	12	149	15	164
July 07	49	24	4	10	6	48	4	10	155	19	174
June 07	41	27	3	8	9	52	9	10	159	20	179
May 07	43	25	8	6	8	50	2	11	153	18	171
April 07	43	31	5	8	8	40	3	13	151	16	167
March 07	47	29	4	8	10	40	4	11	153	22	175
February 07	49	26	3	7	9	29	5	9	137	25	162
January 07	49	25	6	4	8	25	5	8	130	14	144
December 06	45	30	11	2	7	31	3	6	135	14	149
November 06	45	27	13	3	6	25	5	6	130	16	146
October 06	41	30	6	4	9	20	9	5	124	18	142
September 06	44	35	4	4	10	22	5	6	130	15	145
August 06	49	42	8	4	12	26	7	7	155	21	176
July 06	33	47	12	4	11	33	8	6	154	23	177
June 06	44	41	19	4	9	37	12	6	172	22	194
May 06	39	45	24	3	11	46	12	9	189	22	211
April 06	50	51	29	1	13	46	10	10	210	21	231
March 06	60	49	24	4	13	33	7	7	197	14	211
February 06	55	51	24	4	15	37	6	3	195	9	204
January 06	43	36	20	3	16	47	8	3	176	25	201
December 05	43	32	15	6	13	46	6	4	165	22	187
November 05	53	23	22	6	9	39	7	5	164	22	186
October 05	47	28	25	6	11	21	9	5	152	22	174
September 05	42	35	19	4	8	17	8	6	139	20	159
August 05	39	26	18	3	7	24	6	6	129	24	153
July 05	35	23	18	3	12	35	5	7	138	24	162
June 05	38	22	18	4	15	20	5	6	128	24	152
May 05	32	31	26	4	13	15	8	6	135	29	164
April 05	33	25	20	8	17	30	7	4	144	23	167
March 05	23	23	17	2	16	17	6	6	110	20	130
February 05	20	22	12	2	15	18	2	5	96	22	118
January 05	29	23	20	3	16	21	5	8	125	26	151
December 04	31	30	22	4	13	17	7	9	133	29	162
November 04	36	35	31	7	14	20	8	6	157	28	185
October 04	36	34	23	3	12	14	8	8	138	26	164
September 04	31	33	25	10	13	18	4	10	144	17	161

*Community: Community Detention, includes some with Electronic Monitoring, but does not include CD/EM youth pending placement. Also, includes the averages for the Evening Reporting Centers for Baltimore City and Prince George's County which began reporting in March '05.

Average Monthly Committed Residential Population August 2006 - December 2009

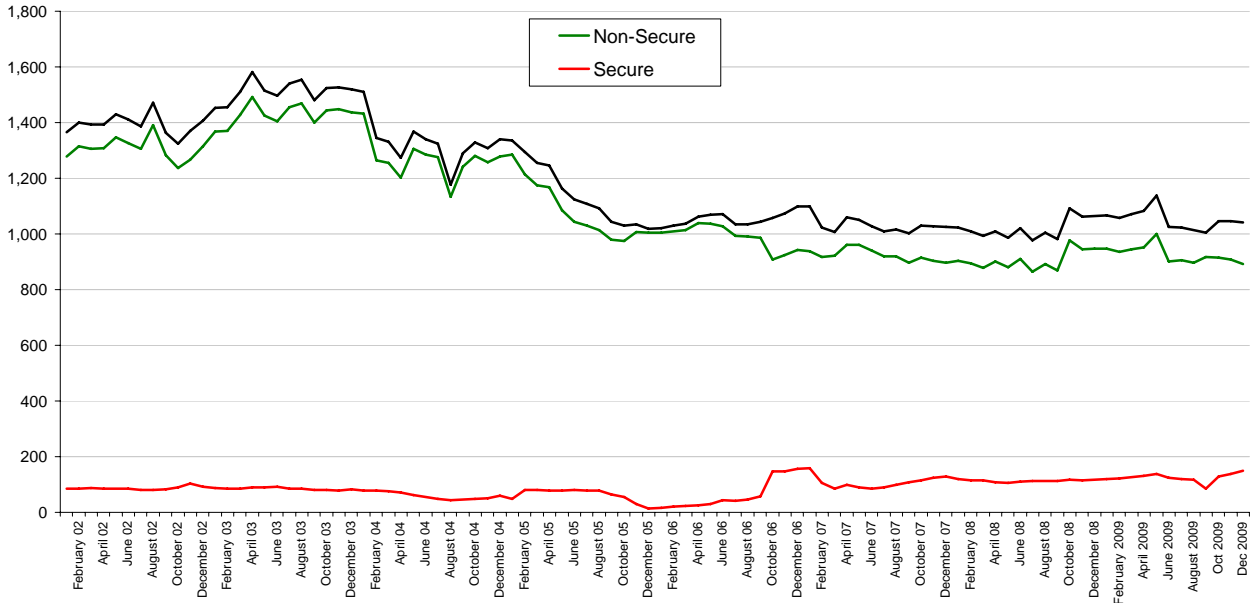
	Secure* Residential			Other** Residential		Total Non-Secure	Committed Residential Total	Commit- ted Male Tot	Committed Female Total
	Male	Female	Total Secure	Male	Female				
Dec 2009	140	9	149	743	149	892	1,041	883	158
Nov 2009	126	11	137	755	153	908	1,045	881	164
Oct 2009	117	12	129	757	159	916	1,045	874	171
Sept 2009	74	12	86	760	158	918	1,004	834	170
August 2009	104	13	117	740	157	897	1,014	844	170
July 2009	105	14	119	753	152	905	1,024	858	166
June 2009	109	16	125	751	150	901	1,026	860	166
May 2009	123	16	139	819	181	1,000	1,139	942	197
April 2009	118	14	132	795	156	951	1,083	913	170
March 2009	114	13	127	795	149	944	1,071	909	162
February 2009	113	9	122	794	142	936	1,058	907	151
January 2009	108	11	119	800	147	947	1,066	908	158
December 08	108	10	118	791	156	947	1,065	899	166
November 08	106	10	116	798	147	945	1,061	904	157
October 08	104	13	117	831	145	976	1,093	935	158
September 08	102	11	113	726	143	869	982	828	154
August 08	101	11	112	754	138	892	1,004	855	149
July 08	101	11	112	764	101	865	977	865	112
June 08	99	11	110	773	138	911	1,021	872	149
May 08	96	9	105	785	96	881	986	881	105
April 08	98	10	108	780	122	902	1,010	878	132
March 08	106	8	114	772	106	878	992	878	114
February 08	109	7	116	773	121	894	1,010	882	128
January 08	113	7	120	778	126	904	1,024	891	133
December 07	121	8	129	772	125	897	1,026	893	133
November 07	115	9	124	774	130	904	1,028	889	139
October 07	107	9	116	775	139	914	1,030	882	148
September 07	99	8	107	766	130	896	1,003	865	138
August 07	91	7	98	784	135	919	1,017	875	142
July 07	82	8	90	784	136	920	1,010	866	144
June 07	78	8	86	801	140	941	1,027	879	148
May 07	80	9	89	820	142	962	1,051	900	151
April 07	90	10	100	807	153	960	1,060	897	163
March 07	75	11	86	791	131	922	1,008	866	142
February 07	95	11	106	788	129	917	1,023	883	140
January 07	149	10	159	809	130	939	1,098	958	140
December 06	147	9	156	813	130	943	1,099	960	139
November 06	138	10	148	793	132	925	1,073	931	142
October 06	137	11	148	787	122	909	1,057	924	133
September 06	46	11	57	865	121	986	1,043	911	132
August 06	34	11	45	878	112	990	1,035	912	123
July 06	30	11	41	882	112	994	1,035	912	123
June 06	32	11	43	904	124	1,028	1,071	936	135
May 06	22	9	31	914	123	1,037	1,068	936	132
April 06	17	8	25	913	125	1,038	1,063	930	133
March 06	13	9	22	908	106	1,014	1,036	921	115
February 06	10	10	20	907	103	1,010	1,030	917	113
January 06	8	7	15	907	98	1,005	1,020	915	105
December 05	7	6	13	904	101	1,005	1,018	911	107
November 05	23	6	29	895	111	1,006	1,035	918	117
October 05	48	7	55	869	105	974	1,029	917	112
September 05	58	6	64	872	108	980	1,044	930	114
August 05	72	7	79	905	109	1,014	1,093	977	116
July 05	72	6	78	924	105	1,029	1,107	996	111
June 05	72	8	80	933	111	1,044	1,124	1,005	119
May 05	71	8	79	953	131	1,084	1,163	1,024	139
April 05	72	6	78	1,028	139	1,167	1,245	1,100	145
March 05	74	6	80	1,032	142	1,174	1,254	1,106	148
February 05	73	8	81	1,063	150	1,213	1,294	1,136	158
January 05	43	6	49	1,138	147	1,286	1,335	1,181	153
December 04	55	5	60	1,136	143	1,279	1,339	1,191	148
November 04	46	5	51	1,113	145	1,258	1,309	1,159	150

*Secure: Includes both State-run secure committed programs and "Enhanced Academy" per-diem programs.

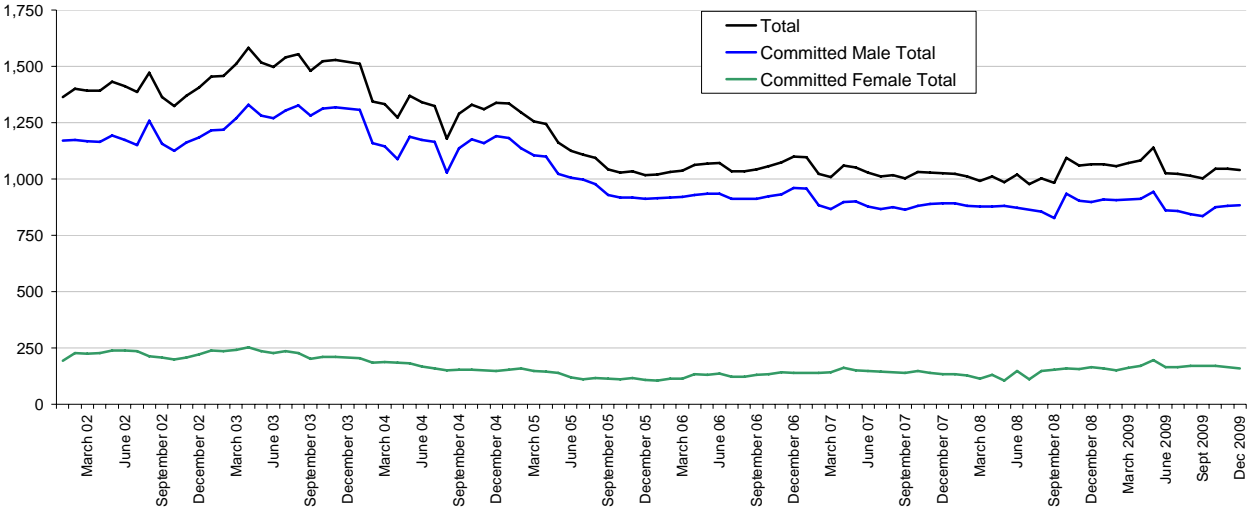
** All other residential programs including Group Homes, RTC's, etc.

This chart does not include youth committed to the department that are either pending placement or are not in a residential placement (receiving In-Home services).

Average Monthly Committed Residential Population, Jan. 2002 - December 2009



Average Monthly Committed Residential Population, By Gender. Jan. 2002 - Dec. 2009



*Secure: Includes both State-run secure committed programs and "Enhanced Academy" per-diem programs.

** All other committed residential programs including Group Homes, RTC's, etc.

This chart does not include youth committed to the department that are either pending placement or are not in a residential placement (receiving In-Home services), detention, or sheltered youth.