



The Maryland
Department of Juvenile Services

FY 2004 Annual Statistical Report

STATISTICAL INFORMATION ON INTAKE, AND PROGRAMS PROVIDED
TO YOUTH IN THE MARYLAND JUVENILE JUSTICE SYSTEM

Every child will become a self-sufficient productive adult.

Robert L. Ehrlich, Jr.
Governor

Michael S. Steele
Lt. Governor

Kenneth C. Montague, Jr.
Secretary

INTRODUCTION

The Maryland Department of Juvenile Services' Office of Research and Planning Unit is pleased to present its 2004 Annual Statistical Report. The Annual Statistical Report brings together, in a single volume, descriptive statistics¹ of the Maryland Department of Juvenile Services (DJS). This report serves as an essential reference book. The numbers contained in this report are used in capital planning, three-year planning and budget documents. Executive, professional, and legislative staff as well as the public relies on these statistics. The Annual Statistical Report contains two sections.

Section One of the report provides the intake profile, which includes case-related information from referral to the court disposition stage. In FY 2004, the Department's Intake Officers handled 53,711 cases. This number of cases represents 35,012 youth. The intake process determines if a youth requires formal court intervention or can be served by pre-court supervision or by processes known as resolving or disapproving the case at intake. A case is counted each time a youth is referred on a new charge during the year.

Section Two provides information about services provided to youths in nonresidential and residential programs. This section contains statistics on DJS contracted programs, community supervision, residential services and secure commitment programs. In FY 2004, the Department served 5,127 youths in out of home placements, including secure detention programs. A separate table of contents is provided for Sections One and Two. This section also includes the juvenile and adult recidivism rates for youths who were released from secure and non-secure residential programs in FY 2001 and FY 2002, separately.

¹

The statistics included in this report have been subject to a detailed quality assurance process that involved removing erroneous cases and minimizing the occurrences of missing data. Because of this quality assurance review, the statistics presented in this report may slightly vary from those included in earlier Departmental documents.

Section One

Intake Data

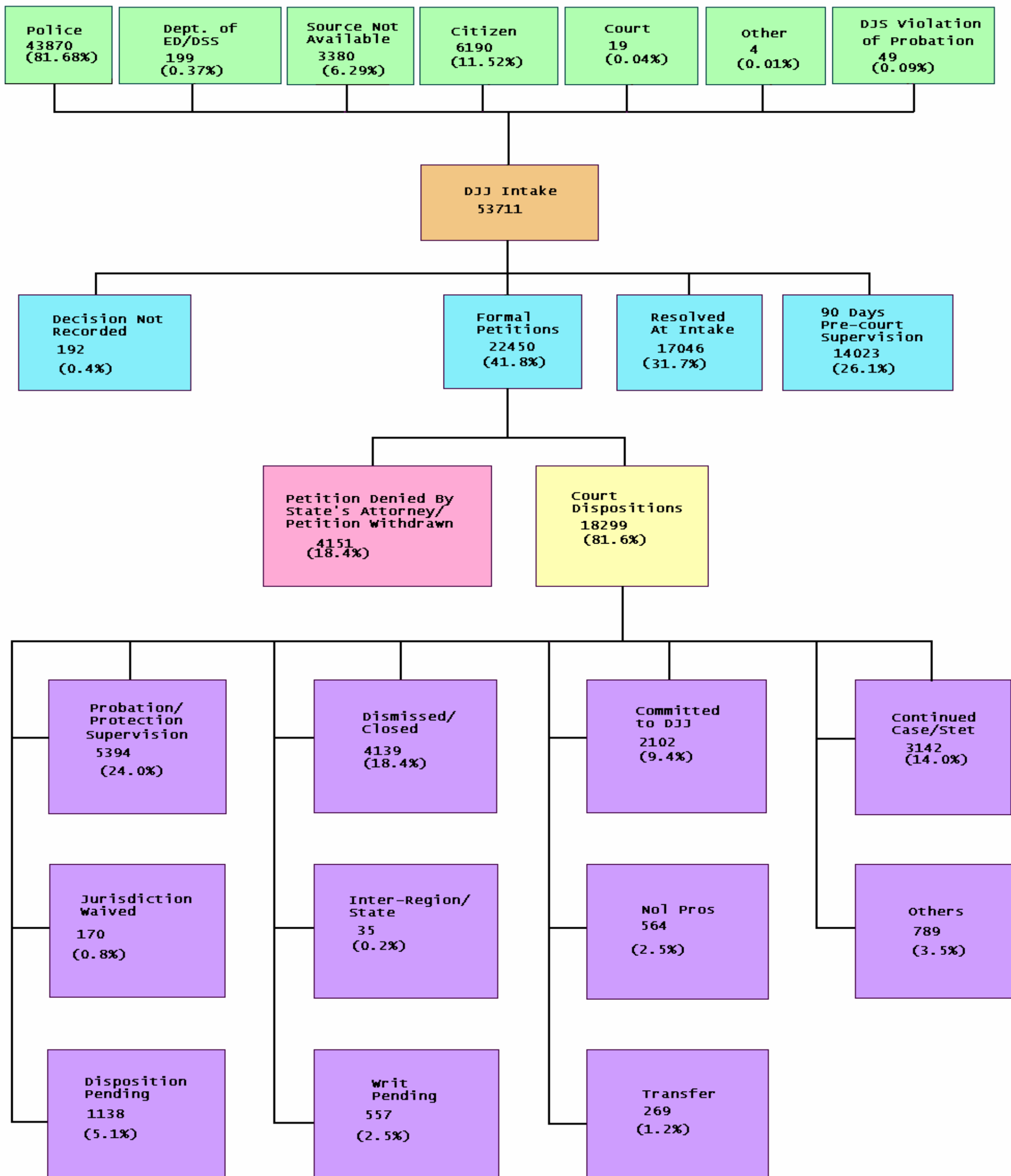
TABLE OF CONTENTS

SECTION ONE

Table 1	Number and Percent of Intake Cases by County of Jurisdiction and by Area: FY 2002 - FY 2004	1
Table 2	Manner of Handling Referrals at Intake by Jurisdiction and by Area: FY 2004	2
Table 3	Rank Order of Formal Cases by County of Jurisdiction: FY 2004	3
Table 4	Number and Percent of Intake Cases by Race: FY 2004	3
Table 5	Intake Cases by Race and County of Jurisdiction: FY 2004	4
Table 6	Manner of Handling Intake Cases by Race and County of Jurisdiction: FY 2004	5
Table 6	Manner of Handling Intake Cases by Race and County of Jurisdiction: FY 2004	6
Table 7	Number and percent of Total Intake Cases by Gender: FY 2004	7
Table 8	Manner of Handling Intake Cases by Gender and County of Jurisdiction: FY 2004	8
Table 9	Intake Cases by Race, Gender and County of Jurisdiction: FY 2004	9
Table 10	Number and Percent of Total Intake Cases by Age: FY 2004	10
Table 11	Intake Cases by Age and County of Jurisdiction: FY 2004	11
Table 12	Intake Cases by Age and County of Jurisdiction for African American Youth: FY 2004	12
Table 13	Intake Cases by Age and County of Jurisdiction for Caucasian Youth: FY 2004	13
Table 14	Intake Cases by Age and County of Jurisdiction for Other Race Group Youth: FY 2004	14
Table 15	Intake Cases by Age and County of Jurisdiction for Males: FY 2004	15
Table 16	Intake Cases by Age and County of Jurisdiction for Females: FY 2004	16
Table 17	Number & Percent of Total Intake Cases by Referral Source: FY 2004	17
Table 18	Intake Cases by Referral Source & County of Jurisdiction: FY 2004	17
Table 19	Intake Cases - Offenses by Offense Type: FY 2002 - FY 2004	18
Table 20	Intake Cases by Alleged Offenses & County of Jurisdiction: FY 2004	19
Table 20	Intake Cases by Alleged Offenses & County of Jurisdiction: FY 2004	20
Table 20	Intake Cases by Alleged Offenses & County of Jurisdiction: FY 2004	21
Table 21	Intake Cases by Alleged Offenses & County of Jurisdiction for African American Youth: FY 2004	22
Table 21	Intake Cases by Alleged Offenses & County of Jurisdiction for African American Youth: FY 2004	23

Table 21	Intake Cases by Alleged Offenses & County of Jurisdiction for African American Youth: FY 2004	24
Table 22	Intake Cases by Alleged Offenses & County of Jurisdiction for Caucasian Youth: FY 2004	25
Table 22	Intake Cases by Alleged Offenses & County of Jurisdiction for Caucasian Youth: FY 2004	26
Table 22	Intake Cases by Alleged Offenses & County of Jurisdiction for Caucasian Youth: FY 2004	27
Table 23	Intake Cases by Alleged Offenses & County of Jurisdiction for All Other Youth: FY 2004	28
Table 23	Intake Cases by Alleged Offenses & County of Jurisdiction for All Other Youth: FY 2004	29
Table 23	Intake Cases by Alleged Offenses & County of Jurisdiction for All Other Youth: FY 2004	30
Table 24	Intake Cases by Alleged Offenses & County of Jurisdiction for Males: FY 2004	31
Table 24	Intake Cases by Alleged Offenses & County of Jurisdiction for Males: FY 2004	32
Table 24	Intake Cases by Alleged Offenses & County of Jurisdiction for Males: FY 2004	33
Table 25	Intake Cases by Alleged Offenses & County of Jurisdiction for Females: FY 2004	34
Table 25	Intake Cases by Alleged Offenses & County of Jurisdiction for Females: FY 2004	35
Table 25	Intake Cases by Alleged Offenses & County of Jurisdiction for Females: FY 2004	36
Table 26	Alleged Offense Rates Per 1,000 Population by Offense Category & County of Jurisdiction: FY 2004	37
Table 27	Rates of Total and Delinquent Referrals Per 1,000 Youth Population: FY 2004	38
Table 28	Court Dispositions of Formalized Cases by Gender: FY 2004	39
Table 29	Court Dispositions of Formalized Cases by Race: FY 2004	40
Table 30	Court Dispositions Cases by County of Jurisdiction: FY 2004	41

Flowchart of Case Referrals in the Maryland Juvenile Services System
FY 2004



Note: Due to the revised version of ASSIST in FY 2004, referral source was not available for 3380 complaint cases.

Table 1
Number and Percent of Intake Cases by County of Jurisdiction and by Area
FY 2002 - FY 2004

Area	2002 Cases	Percent of Cases	2003 Cases	Percent of Cases	2004 Cases	Percent of Cases	Percent Change 03 to '04
Baltimore City	12055	22.2	12253	22.9	11776	21.9	-3.9%
Area 1 Total	12055	22.2	12253	22.9	11776	21.9	-3.9%
Baltimore County	7408	13.7	6938	13.0	7112	13.2	2.5%
Carroll	1320	2.4	1351	2.5	1396	2.6	3.3%
Harford	2173	4.0	2230	4.2	2104	3.9	-5.7%
Howard	2038	3.8	1541	2.9	1662	3.1	7.9%
Area 2 Total	12939	23.9	12060	22.6	12274	22.9	8.0%
Allegany	1009	1.9	1062	2.0	1100	2.0	3.6%
Frederick	2234	4.1	1947	3.6	1691	3.1	-13.1%
Garrett	254	0.5	279	0.5	273	0.5	-2.2%
Montgomery	4202	7.7	4045	7.6	4227	7.9	4.5%
Washington	1543	2.8	1523	2.8	1688	3.1	10.8%
Area 3 Total	9242	17.0	8856	16.5	8979	16.7	3.6%
Caroline	571	1.1	602	1.1	463	0.9	-23.1%
Cecil	1134	2.1	1234	2.3	1116	2.1	-9.6%
Dorchester	638	1.2	676	1.3	778	1.4	15.1%
Kent	338	0.6	372	0.7	277	0.5	-25.5%
Queen Anne's	503	0.9	500	0.9	477	0.9	-4.6%
Somerset	269	0.5	319	0.6	284	0.5	-11.0%
Talbot	481	0.9	495	0.9	498	0.9	0.6%
Wicomico	1647	3.0	1816	3.4	1708	3.2	-5.9%
Worcester	1398	2.6	1395	2.6	1506	2.8	8.0%
Area 4 Total	6979	12.9	7409	13.8	7107	13.2	-56.1%
Anne Arundel	5423	10.0	5211	9.7	5248	9.8	0.7%
Calvert	934	1.7	948	1.8	937	1.7	-1.2%
Charles	1498	2.8	1681	3.1	1626	3.0	-3.3%
Prince George's	4120	7.6	4163	7.8	4838	9.0	16.2%
St. Mary's	997	1.8	883	1.7	906	1.7	2.6%
Area 5 Total	12972	23.9	12886	24.1	13555	25.2	15.1%
Out of State	55	0.1	38	0.1	20	0.1	-47.4%
State Total	54242	100.0	53502	100.0	53711	100.0	0.4%

Table 2
Manner of Handling Referrals at Intake by Jurisdiction and by Area
FY 2004

Area	Formal Petitions	Percent Formal Petition	90 Days Pre Court Supervision	Percent 90 Days Pre Court Supervision	Resolved at Intake	Percent Resolved at Intake	No Jurisdiction	Percent No Jurisdiction	Decision Not Recorded	Percent Decision Not Recorded	Jurisdiction Total	Percent Jurisdiction Total
Baltimore City	6892	30.7	1706	12.2	3062	18.9	59	7.2	57	29.7	11776	21.9
Area 1 Total	6892	30.7	1706	12.2	3062	18.9	59	7.2	57	29.7	11776	21.9
Baltimore County	3774	16.8	1332	9.5	1883	11.6	107	13.0	16	8.3	7112	13.2
Carroll	485	2.2	394	2.8	451	2.8	55	6.7	11	5.7	1396	2.6
Harford	651	2.9	590	4.2	808	5.0	55	6.7	0	0.0	2104	3.9
Howard	586	2.6	501	3.6	498	3.1	66	8.0	11	5.7	1662	3.1
Area 2 Total	5496	24.5	2817	20.1	3640	22.4	283	34.3	38	19.8	12274	22.9
Allegany	303	1.3	361	2.6	404	2.5	32	3.9	0	0.0	1100	2.0
Frederick	672	3.0	763	5.4	217	1.3	39	4.7	0	0.0	1691	3.1
Garrett	38	0.2	97	0.7	104	0.6	33	4.0	1	0.5	273	0.5
Montgomery	1902	8.5	1041	7.4	1242	7.7	30	3.6	12	6.3	4227	7.9
Washington	675	3.0	600	4.3	382	2.4	30	3.6	1	0.5	1688	3.1
Area 3 Total	3590	16.0	2862	20.4	2349	14.5	164	19.9	14	7.3	8979	16.7
Caroline	147	0.7	137	1.0	175	1.1	4	0.5	0	0.0	463	0.9
Cecil	458	2.0	438	3.1	178	1.1	28	3.4	14	7.3	1116	2.1
Dorchester	142	0.6	179	1.3	399	2.5	58	7.0	0	0.0	778	1.4
Kent	70	0.3	53	0.4	128	0.8	26	3.2	0	0.0	277	0.5
Queen Anne's	113	0.5	112	0.8	219	1.4	30	3.6	3	1.6	477	0.9
Somerset	77	0.3	98	0.7	104	0.6	4	0.5	1	0.5	284	0.5
Talbot	155	0.7	149	1.1	176	1.1	18	2.2	0	0.0	498	0.9
Wicomico	437	1.9	356	2.5	877	5.4	15	1.8	23	12.0	1708	3.2
Worcester	173	0.8	789	5.6	492	3.0	42	5.1	10	5.2	1506	2.8
Area 4 Total	1772	7.9	2311	16.5	2748	16.9	225	27.3	51	26.6	7107	13.2
Anne Arundel	1745	7.8	1682	12.0	1776	10.9	42	5.1	3	1.6	5248	9.8
Calvert	383	1.7	322	2.3	221	1.4	5	0.6	6	3.1	937	1.7
Charles	455	2.0	901	6.4	264	1.6	4	0.5	2	1.0	1626	3.0
Prince George's	1792	8.0	1066	7.6	1921	11.8	41	5.0	18	9.4	4838	9.0
St. Mary's	305	1.4	356	2.5	241	1.5	1	0.1	3	1.6	906	1.7
Area 5 Total	4680	20.8	4327	30.9	4423	27.3	93	11.3	32	16.7	13555	25.2
Out of State	20	0.1	0	0.0	0	0.0	0	0.0	0	0.0	20	0.1
Out of State Total	20	0.1	0	0.0	0	0.0	0	0.0	0	0.0	20	0.1
State Total	22450	100.0	14023	100.0	16222	100.0	824	100.0	192	100.0	53711	100.0

Table3
Rank Order of Formal Cases by County of Jurisdiction
FY 2004

Area	Formal Petitions	Percent Formal Cases
Baltimore City	6892	30.7
Baltimore County	3774	16.8
Montgomery	1902	8.5
Prince George's	1792	8.0
Anne Arundel	1745	7.8
Frederick	672	3.0
Washington	675	3.0
Harford	651	2.9
Howard	586	2.6
Carroll	485	2.2
Cecil	458	2.0
Charles	455	2.0
Wicomico	437	1.9
Calvert	383	1.7
St. Mary's	305	1.4
Allegany	303	1.3
Worcester	173	0.8
Caroline	147	0.7
Talbot	155	0.7
Dorchester	142	0.6
Queen Anne's	113	0.5
Kent	70	0.3
Somerset	77	0.3
Garrett	38	0.2
Out of State	20	0.1

Table 4
Number and Percent of Total Intake Cases by Race
FY 2004

Manner of Handling Cases	African American	Percent African American	White	Percent White	Other	Percent Other	Total	Percent Total
Formal Petitions	14076	47.9	7558	33.5	816	45.9	22450	41.8
90 days Pre Court Supervision	5759	19.6	7836	34.8	428	24.1	14023	26.1
Resolved at Intake	9441	32.1	7083	31.4	522	29.4	17046	31.7
Decision not Recorded	110	0.4	71	0.3	11	0.6	192	0.4
Total	29386	100.0	22548	100.0	1777	100.0	53711	100.0

**Table 5
Intake Cases by Race and by County of Jurisdiction
FY 2004**

Area	African American	Percent African American	White	Percent White	Other	Percent Other	Jurisdiction Total
Baltimore City	10967	37.3	733	3.3	76	4.3	11776
Area 1 Total	10967	37.3	733	3.3	76	4.3	11776
Baltimore County	3886	13.2	3126	13.9	100	5.6	7112
Carroll	113	0.4	1273	5.6	10	0.6	1396
Harford	678	2.3	1385	6.1	41	2.3	2104
Howard	760	2.6	803	3.6	99	5.6	1662
Area 2 Total	5437	18.5	6587	29.2	250	14.1	12274
Allegany	174	0.6	908	4.0	18	1.0	1100
Frederick	405	1.4	1198	5.3	88	5.0	1691
Garrett	13	0.0	258	1.1	2	0.1	273
Montgomery	1838	6.3	1622	7.2	767	43.2	4227
Washington	296	1.0	1307	5.8	85	4.8	1688
Area 3 Total	2726	9.3	5293	23.5	960	54.0	8979
Caroline	162	0.6	300	1.3	1	0.1	463
Cecil	85	0.3	1006	4.5	25	1.4	1116
Dorchester	451	1.5	323	1.4	4	0.2	778
Kent	111	0.4	162	0.7	4	0.2	277
Queen Anne's	98	0.3	372	1.6	7	0.4	477
Somerset	133	0.5	141	0.6	10	0.6	284
Talbot	196	0.7	292	1.3	10	0.6	498
Wicomico	1032	3.5	646	2.9	30	1.7	1708
Worcester	259	0.9	1215	5.4	32	1.8	1506
Area 4 Total	2527	8.6	4457	19.8	123	6.9	7107
Anne Arundel	2152	7.3	3004	13.3	92	5.2	5248
Calvert	252	0.9	682	3.0	3	0.2	937
Charles	895	3.0	709	3.1	22	1.2	1626
Prince George's	4085	13.9	515	2.3	238	13.4	4838
St. Mary's	331	1.1	563	2.5	12	0.7	906
Area 5 Total	7715	26.3	5473	24.3	367	20.7	13555
Out of State	14	0.0	5	0.0	1	0.1	20
Out of State Total	14	0.0	5	0.0	1	0.1	20
State Total	29386	100.0	22548	100.0	1777	100.0	53711

Table 6
Manner of Handling Cases by Race and County of Jurisdiction
FY 2004

Area	African American					White				
	Formal	Informal	Resolved At Intake	Decision Not Recorded	African American Total	Formal	Informal	Resolved At Intake	Decision Not Recorded	White Total
Baltimore City	6459	1573	2883	52	10967	397	118	215	3	733
Area 1 Total	6459	1573	2883	52	10967	397	118	215	3	733
Baltimore County	2045	641	1189	11	3886	1678	677	766	5	3126
Carroll	52	24	37	0	113	429	367	466	11	1273
Harford	258	157	263	0	678	388	420	577	0	1385
Howard	320	162	277	1	760	227	311	258	7	803
Area 2 Total	2675	984	1766	12	5437	2722	1775	2067	23	6587
Allegany	66	30	78	0	174	227	328	353	0	908
Frederick	210	116	79	0	405	427	612	159	0	1198
Garrett	6	3	4	0	13	32	94	131	1	258
Montgomery	942	306	585	5	1838	556	572	490	4	1622
Washington	113	93	90	0	296	532	482	292	1	1307
Area 3 Total	1337	548	836	5	2726	1774	2088	1425	6	5293
Caroline	70	35	57	0	162	77	102	121	0	300
Cecil	33	36	16	0	85	412	396	184	14	1006
Dorchester	96	87	268	0	451	46	92	185	0	323
Kent	28	22	61	0	111	42	31	89	0	162
Queen Anne's	35	13	49	1	98	74	96	200	2	372
Somerset	40	38	54	1	133	33	55	53	0	141
Talbot	59	56	81	0	196	95	91	106	0	292
Wicomico	288	165	566	13	1032	143	180	314	9	646
Worcester	58	98	99	4	259	107	672	430	6	1215
Area 4 Total	707	550	1251	19	2527	1029	1715	1682	31	4457
Anne Arundel	802	589	759	2	2152	917	1065	1021	1	3004
Calvert	126	58	67	1	252	256	263	158	5	682
Charles	296	519	80	0	895	144	378	186	1	709
Prince George's	1536	834	1699	16	4085	138	186	190	1	515
St. Mary's	124	104	100	3	331	176	248	139	0	563
Area 5 Total	2884	2104	2705	22	7715	1631	2140	1694	8	5473
Out of State	14	0	0	0	14	5	0	0	0	5
Out of State Total	14	0	0	0	14	5	0	0	0	5
State total	14076	5759	9441	110	29386	7558	7836	7083	71	22548

**Table 6
Manner of Handling Cases by Race and County of Jurisdiction
FY 2004**

Area	Other					Jurisdiction Total
	Formal	Informal	Resolved At Intake	Decision Not Recorded	Other Total	
Baltimore City	36	15	23	2	76	11776
Area 1 Total	36	15	23	2	76	11776
Baltimore	51	14	35	0	100	7112
Carroll	4	3	3	0	10	1396
Harford	5	13	23	0	41	2104
Howard	39	28	29	3	99	1662
Area 2 Total	99	58	90	3	250	12274
Allegany	10	3	5	0	18	1100
Frederick	35	35	18	0	88	1691
Garrett	0	0	2	0	2	273
Montgomery	404	163	197	3	767	4227
Washington	30	25	30	0	85	1688
Area 3 Total	479	226	252	3	960	8979
Caroline	0	0	1	0	1	463
Cecil	13	6	6	0	25	1116
Dorchester	0	0	4	0	4	778
Kent	0	0	4	0	4	277
Queen Anne's	4	3	0	0	7	477
Somerset	4	5	1	0	10	284
Talbot	1	2	7	0	10	498
Wicomico	6	11	12	1	30	1708
Worcester	8	19	5	0	32	1506
Area 4 Total	36	46	40	1	123	7107
Anne Arundel	26	28	38	0	92	5248
Calvert	1	1	1	0	3	937
Charles	15	4	2	1	22	1626
Prince George's	118	46	73	1	238	4838
St. Mary's	5	4	3	0	12	906
Area 5 Total	165	83	117	2	367	13555
Out of State	1	0	0	0	1	20
Out of State Total	1	0	0	0	1	20
State Total	816	428	522	11	1777	53711

**Table 7
Number & Percent of Total Intake Cases by Gender
FY 2004**

Manner of Handling Cases	Male	Percent Male	Female	Percent Female	Total
Formal Petitions	18833	46.3%	3617	27.8%	22450
90 days Pre Court Supervision	10128	24.9%	3895	29.9%	14023
Resolved at Intake	11593	28.5%	5453	41.9%	17046
Decision not Recorded	134	0.3%	58	0.4%	192
State Total	40688	100.0%	13023	100.0%	53711

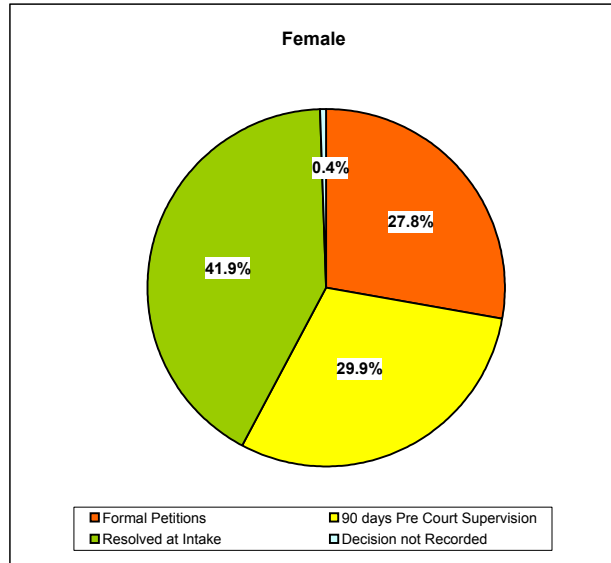
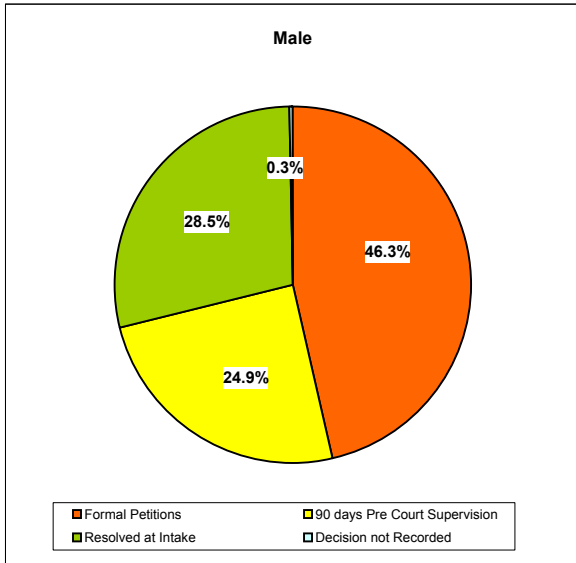


Table 8
Manner of Handling Intake Cases by Gender and County of Jurisdiction
FY 2004

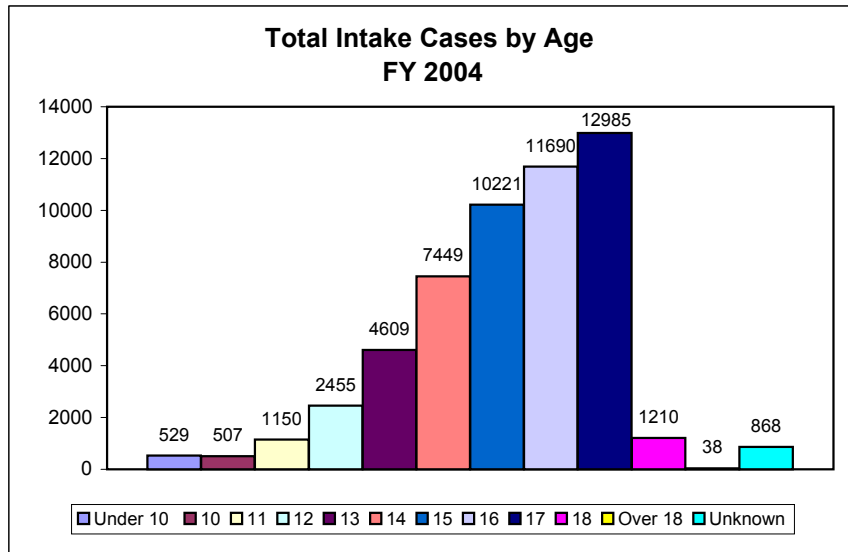
Area	Female					Male					Jurisdiction Total		
	Formal	Informal	Resolved At Intake	Decision Not Recorded	Female Total	Percent Total	Formal Petitions	Informal	Resolved at Intake	Decision Not Recorded		Male Total	Percent Total
Baltimore City	837	422	772	13	2044	15.7	6055	1284	2349	44	9732	23.9	11776
Area 1 Total	837	422	772	13	2044	15.7	6055	1284	2349	44	9732	23.9	11776
Baltimore County	816	411	705	5	1937	14.9	2958	921	1285	11	5175	12.7	7112
Carroll	110	112	201	4	427	3.3	375	282	305	7	969	2.4	1396
Harford	101	161	260	0	522	4.0	550	429	603	0	1582	3.9	2104
Howard	93	138	180	3	414	3.2	493	363	384	8	1248	3.1	1662
Area 2 Total	1120	822	1346	12	3300	25.3	4376	1995	2577	26	8974	22.1	12274
Allegany	76	163	159	0	398	3.1	227	198	277	0	702	1.7	1100
Frederick	159	226	93	0	478	3.7	513	537	163	0	1213	3.0	1691
Garrett	9	24	40	0	73	0.6	29	73	97	1	200	0.5	273
Montgomery	274	252	422	2	950	7.3	1628	789	850	10	3277	8.1	4227
Washington	73	177	169	1	420	3.2	602	423	243	0	1268	3.1	1688
Area 3 Total	591	842	883	3	2319	17.8	2999	2020	1630	11	6660	16.4	8979
Caroline	31	36	61	0	128	1.0	116	101	118	0	335	0.8	463
Cecil	100	114	66	5	285	2.2	358	324	140	9	831	2.0	1116
Dorchester	24	45	179	0	248	1.9	118	134	278	0	530	1.3	778
Kent	18	16	52	0	86	0.7	52	37	102	0	191	0.5	277
Queen Anne's	18	32	85	1	136	1.0	95	80	164	2	341	0.8	477
Somerset	7	31	30	1	69	0.5	70	67	78	0	215	0.5	284
Talbot	31	36	64	0	131	1.0	124	113	130	0	367	0.9	498
Wicomico	86	126	333	8	553	4.2	351	230	559	15	1155	2.8	1708
Worcester	40	241	175	2	458	3.5	133	548	359	8	1048	2.6	1506
Area 4 Total	355	677	1045	17	2094	16.1	1417	1634	1928	34	5013	12.3	7107
Anne Arundel	303	439	624	1	1367	10.5	1442	1243	1194	2	3881	9.5	5248
Calvert	73	92	109	1	275	2.1	310	230	117	5	662	1.6	937
Charles	66	282	88	2	438	3.4	389	619	180	0	1188	2.9	1626
Prince George's	216	215	502	8	941	7.2	1576	851	1460	10	3897	9.6	4838
St. Mary's	53	104	84	1	242	1.9	252	252	158	2	664	1.6	906
Area 5 Total	711	1132	1407	13	3263	25.1	3969	3195	3109	19	10292	25.3	13555
Out of State	3	0	0	0	3	0.0	17	0	0	0	17	0.0	20
Out of State Total	3	0	0	0	3	0.0	17	0	0	0	17	0.0	20
State Total	3617	3895	5453	58	13023	100.0	18833	10128	11593	134	40688	100.0	53711

Table 9
Intakes Cases by Race, Gender, and County of Jurisdiction
FY 2004

Area	African American				White					Other					Jurisdiction Total	
	Male	Percent Total	Female	Percent Total	African American Total	Male	Percent Total	Female	Percent Total	White Total	Male	Percent Total	Female	Percent Total		Other Total
Baltimore City	9149	40.1	1818	27.8	10967	524	3.2	209	3.4	733	59	4.2	17	4.4	76	11776
Area 1 Total	9149	40.1	1818	27.8	10967	524	3.2	209	3.4	733	59	4.2	17	4.4	76	11776
Baltimore County	2735	12.0	1151	17.6	3886	2376	14.4	750	12.3	3126	64	4.6	36	9.3	100	7112
Carroll	85	0.4	28	0.4	113	878	5.3	395	6.5	1273	6	0.4	4	1.0	10	1396
Harford	521	2.3	157	2.4	678	1038	6.3	347	5.7	1385	23	1.7	18	4.7	41	2104
Howard	578	2.5	182	2.8	760	591	3.6	212	3.5	803	79	5.7	20	5.2	99	1662
Area 2 Total	3919	17.2	1518	23.2	5437	4883	29.7	1704	28.0	6587	172	12.4	78	20.2	250	12274
Allegany	125	0.5	49	0.7	174	561	3.4	347	5.7	908	16	1.2	2	0.5	18	1100
Frederick	298	1.3	107	1.6	405	855	5.2	343	5.6	1198	60	4.3	28	7.3	88	1691
Garrett	13	0.1	0	0.0	13	185	1.1	73	1.2	258	2	0.1	0	0.0	2	273
Montgomery	1412	6.2	426	6.5	1838	1242	7.5	380	6.2	1622	623	44.8	144	37.3	767	4227
Washington	216	0.9	80	1.2	296	981	6.0	326	5.4	1307	71	5.1	14	3.6	85	1688
Area 3 Total	2064	9.0	662	10.1	2726	3824	23.2	1469	24.1	5293	772	55.5	188	48.7	960	8979
Caroline	116	0.5	46	0.7	162	218	1.3	82	1.3	300	1	0.1	0	0.0	1	463
Cecil	60	0.3	25	0.4	85	755	4.6	251	4.1	1006	16	1.2	9	2.3	25	1116
Dorchester	303	1.3	148	2.3	451	225	1.4	98	1.6	323	2	0.1	2	0.5	4	778
Kent	66	0.3	45	0.7	111	123	0.7	39	0.6	162	2	0.1	2	0.5	4	277
Queen Anne's	72	0.3	26	0.4	98	263	1.6	109	1.8	372	6	0.4	1	0.3	7	477
Somerset	97	0.4	36	0.5	133	108	0.7	33	0.5	141	10	0.7	0	0.0	10	284
Talbot	141	0.6	55	0.8	196	219	1.3	73	1.2	292	7	0.5	3	0.8	10	498
Wicomico	692	3.0	340	5.2	1032	439	2.7	207	3.4	646	24	1.7	6	1.6	30	1708
Worcester	198	0.9	61	0.9	259	821	5.0	394	6.5	1215	29	2.1	3	0.8	32	1506
Area 4 Total	1745	7.6	782	11.9	2527	3171	19.3	1286	21.1	4457	97	7.0	26	6.7	123	7107
Anne Arundel	1538	6.7	614	9.4	2152	2266	13.8	738	12.1	3004	77	5.5	15	3.9	92	5248
Calvert	194	0.8	58	0.9	252	465	2.8	217	3.6	682	3	0.2	0	0.0	3	937
Charles	688	3.0	207	3.2	895	487	3.0	222	3.6	709	13	0.9	9	2.3	22	1626
Prince George's	3309	14.5	776	11.9	4085	400	2.4	115	1.9	515	188	13.5	50	13.0	238	4838
St. Mary's	220	1.0	111	1.7	331	434	2.6	129	2.1	563	10	0.7	2	0.5	12	906
Area 5 Total	5949	26.0	1766	27.0	7715	4052	24.6	1421	23.3	5473	291	20.9	76	19.7	367	13555
Out of State	13	0.1	1	0.1	14	4	0.1	1	0.1	5	0	0.0	1	0.3	1	20
State Total	22839	100.0	6547	100.0	29386	16458	100.0	6090	100.0	22548	1391	100.0	386	100.0	1777	53711

Table 10
Number and Percent of Total Intake Cases by Age
FY 2004

Age of Youth	2002 Cases	Percent Cases	2003 Cases	Percent Cases	2004 Cases	Percent Cases	% Change 03 to '04
Under 10	614	1.1	585	1.1	529	1.0	-9.6
Ten	653	1.2	560	1.0	507	0.9	-9.5
Eleven	1240	2.3	1263	2.4	1150	2.1	-8.9
Twelve	2425	4.5	2419	4.5	2455	4.6	1.5
Thirteen	4627	8.5	4505	8.4	4609	8.6	2.3
Fourteen	7140	13.2	7385	13.8	7449	13.9	0.9
Fifteen	10122	18.7	10240	19.1	10221	19.0	-0.2
Sixteen	11919	22.0	11736	21.9	11690	21.8	-0.4
Seventeen	13066	24.1	13131	24.5	12985	24.2	-1.1
Eighteen	1450	2.7	1357	2.5	1210	2.3	-10.8
Over Eighteen	0	0.0	0	0.0	38	0.1	N/A
Unknown	986	1.8	321	0.6	868	1.6	170.4
State Total	54242	100.0	53502	100.0	53711	100.0	0.4



**Table 11
Intake Cases by Age and County of Jurisdiction
FY 2004**

Area	Under 10	10	11	12	13	14	15	16	17	18	Over 18	Age Unknown	Jurisdiction Total
Baltimore City	116	100	238	520	1003	1661	2346	2654	2834	84	4	216	11776
Area 1 Total	116	100	238	520	1003	1661	2346	2654	2834	84	4	216	11776
Baltimore County	38	60	172	332	681	1002	1393	1551	1631	155	3	94	7112
Carroll	8	11	31	43	94	149	285	328	392	34	1	20	1396
Harford	24	28	58	110	186	307	385	449	470	61	0	26	2104
Howard	8	5	20	56	113	203	298	410	465	64	3	17	1662
Area 2 Total	78	104	281	541	1074	1661	2361	2738	2958	314	7	157	12274
Allegany	21	11	36	61	107	172	194	218	241	22	0	17	1100
Frederick	23	15	30	124	165	239	274	329	433	40	1	18	1691
Garrett	17	5	7	15	22	30	43	56	65	4	1	8	273
Montgomery	21	20	53	131	255	550	811	945	1174	200	6	61	4227
Washington	30	22	36	99	166	215	321	358	388	26	0	27	1688
Area 3 Total	112	73	162	430	715	1206	1643	1906	2301	292	8	131	8979
Caroline	9	3	7	27	32	62	88	104	119	10	0	2	463
Cecil	14	9	36	68	101	169	182	237	243	25	0	32	1116
Dorchester	11	19	20	45	70	99	179	157	161	9	0	8	778
Kent	5	3	5	10	30	29	68	54	68	5	0	0	277
Queen Anne's	6	8	9	33	42	71	86	86	121	6	0	9	477
Somerset	6	7	8	27	40	39	47	56	45	6	0	3	284
Talbot	7	7	21	39	38	61	67	97	142	11	1	7	498
Wicomico	27	27	80	140	228	306	285	286	270	33	2	24	1708
Worcester	4	6	21	16	62	109	199	312	660	82	1	34	1506
Area 4 Total	89	89	207	405	643	945	1201	1389	1829	187	4	119	7107
Anne Arundel	55	53	100	256	487	779	996	1185	1178	72	6	81	5248
Calvert	7	5	11	30	89	121	149	201	295	17	0	12	937
Charles	21	20	34	66	117	239	298	347	425	41	2	16	1626
Prince George's	41	57	84	160	395	716	1054	1055	961	185	7	123	4838
St. Mary's	10	6	33	46	86	118	166	213	200	15	0	13	906
Area 5 Total	134	141	262	558	1174	1973	2663	3001	3059	330	15	245	13555
Out of State	0	0	0	1	0	3	7	2	4	3	0	0	20
Out of State Total	0	0	0	1	0	3	7	2	4	3	0	0	20
State Total	529	507	1150	2455	4609	7449	10221	11690	12985	1210	38	868	53711

Table 12
Intake Cases by Age and County of Jurisdiction for African American Youth
FY 2004

Area	Under 10	10	11	12	13	14	15	16	17	18	Over 18	Age Unknown	Jurisdiction Total
Baltimore City	107	97	215	477	936	1564	2197	2480	2616	78	4	196	10967
Area 1 Total	107	97	215	477	936	1564	2197	2480	2616	78	4	196	10967
Baltimore County	25	37	118	221	437	588	791	767	778	78	1	45	3886
Carroll	2	0	6	5	8	15	21	20	29	3	0	4	113
Harford	12	16	32	49	77	112	114	128	112	16	0	10	678
Howard	8	4	14	39	65	102	128	204	167	22	2	5	760
Area 2 Total	47	57	170	314	587	817	1054	1119	1086	119	3	64	5437
Allegany	3	0	12	9	11	33	49	31	25	0	0	1	174
Frederick	14	9	12	40	57	56	69	60	72	9	0	7	405
Garrett	0	0	0	0	2	1	1	6	1	1	0	1	13
Montgomery	14	10	33	68	162	291	347	410	399	71	5	28	1838
Washington	11	14	14	33	47	33	48	56	30	5	0	5	296
Area 3 Total	42	33	71	150	279	414	514	563	527	86	5	42	2726
Caroline	2	2	3	9	8	31	34	38	32	2	0	1	162
Cecil	3	2	3	10	12	10	10	19	14	0	0	2	85
Dorchester	9	10	9	36	44	70	94	83	87	5	0	4	451
Kent	4	3	5	5	16	16	26	21	13	2	0	0	111
Queen Anne's	2	0	3	13	11	20	11	8	25	2	0	3	98
Somerset	6	6	7	17	16	16	15	27	18	5	0	0	133
Talbot	5	3	9	28	16	33	34	30	35	1	0	2	196
Wicomico	21	19	60	110	160	224	167	133	117	12	0	9	1032
Worcester	2	4	13	13	26	37	42	47	62	9	0	4	259
Area 4 Total	54	49	112	241	309	457	433	406	403	38	0	25	2527
Anne Arundel	30	24	47	135	244	348	436	456	387	19	1	25	2152
Calvert	1	3	5	4	33	26	39	48	83	5	0	5	252
Charles	13	12	23	45	76	149	191	174	186	19	2	5	895
Prince George's	34	51	76	134	328	602	917	893	796	143	7	104	4085
St. Mary's	3	3	11	23	38	52	64	67	56	9	0	5	331
Area 5 Total	81	93	162	341	719	1177	1647	1638	1508	195	10	144	7715
Out of State	0	0	0	1	0	2	6	1	2	2	0	0	14
Out of State Total	0	0	0	1	0	2	6	1	2	2	0	0	14
State Total	331	329	730	1524	2830	4431	5851	6207	6142	518	22	471	29386

Table 13
Intake Cases by Age and County of Jurisdiction for White Youth
FY 2004

Area	Under 10	10	11	12	13	14	15	16	17	18	Over 18	Age Unknown	Jurisdiction Total
Baltimore City	9	3	19	38	59	91	128	163	202	5	0	16	733
Area 1 Total	9	3	19	38	59	91	128	163	202	5	0	16	733
Baltimore County	12	23	52	108	221	399	586	765	835	75	2	48	3126
Carroll	6	11	24	37	83	134	263	306	361	31	1	16	1273
Harford	12	11	26	59	107	183	264	317	345	45	0	16	1385
Howard	0	1	4	16	42	83	152	189	269	39	0	8	803
Area 2 Total	30	46	106	220	453	799	1265	1577	1810	190	3	88	6587
Allegany	15	11	24	51	96	139	143	179	212	22	0	16	908
Frederick	8	6	15	67	97	172	197	249	344	31	1	11	1198
Garrett	17	5	7	15	19	28	42	50	64	3	1	7	258
Montgomery	4	4	12	22	52	161	278	356	611	99	0	23	1622
Washington	19	7	19	59	111	168	262	284	336	21	0	21	1307
Area 3 Total	63	33	77	214	375	668	922	1118	1567	176	2	78	5293
Caroline	7	1	4	18	24	31	54	65	87	8	0	1	300
Cecil	10	7	32	58	88	153	169	212	224	25	0	28	1006
Dorchester	2	9	11	9	26	29	84	73	73	3	0	4	323
Kent	1	0	0	5	13	13	40	32	55	3	0	0	162
Queen Anne's	4	8	6	20	27	49	75	78	95	4	0	6	372
Somerset	0	1	1	9	19	21	30	29	27	1	0	3	141
Talbot	1	3	11	10	22	28	32	67	102	10	1	5	292
Wicomico	5	7	19	27	67	78	118	143	145	20	2	15	646
Worcester	2	2	7	1	36	71	157	259	579	70	1	30	1215
Area 4 Total	32	38	91	157	322	473	759	958	1387	144	4	92	4457
Anne Arundel	24	29	53	117	233	416	541	709	772	50	4	56	3004
Calvert	6	2	6	26	55	95	110	153	210	12	0	7	682
Charles	6	8	11	20	39	89	105	168	233	22	0	8	709
Prince George's	5	6	3	17	22	62	92	134	132	30	0	12	515
St. Mary's	6	3	22	20	47	63	102	142	144	6	0	8	563
Area 5 Total	47	48	95	200	396	725	950	1306	1491	120	4	91	5473
Out of State	0	0	0	0	0	1	1	1	1	1	0	0	5
Out of State Total	0	0	0	0	0	1	1	1	1	1	0	0	5
State Total	181	168	388	829	1605	2757	4025	5123	6458	636	13	365	22548

**Table 14
Intake Cases by Age and County of Jurisdiction for Other Race Group Youth
FY 2004**

Area	Under 10	10	11	12	13	14	15	16	17	18	Over 18	Age Unknown	Jurisdiction Total
Baltimore City	0	0	4	5	8	6	21	11	16	1	0	4	76
Area 1 Total	0	0	4	5	8	6	21	11	16	1	0	4	76
Baltimore County	1	0	2	3	23	15	16	19	18	2	0	1	100
Carroll	0	0	1	1	3	0	1	2	2	0	0	0	10
Harford	0	1	0	2	2	12	7	4	13	0	0	0	41
Howard	0	0	2	1	6	18	18	17	29	3	1	4	99
Area 2 Total	1	1	5	7	34	45	42	42	62	5	1	5	250
Allegany	3	0	0	1	0	0	2	8	4	0	0	0	18
Frederick	1	0	3	17	11	11	8	20	17	0	0	0	88
Garrett	0	0	0	0	1	1	0	0	0	0	0	0	2
Montgomery	3	6	8	41	41	98	186	179	164	30	1	10	767
Washington	0	1	3	7	8	14	11	18	22	0	0	1	85
Area 3 Total	7	7	14	66	61	124	207	225	207	30	1	11	960
Caroline	0	0	0	0	0	0	0	1	0	0	0	0	1
Cecil	1	0	1	0	1	6	3	6	5	0	0	2	25
Dorchester	0	0	0	0	0	0	1	1	1	1	0	0	4
Kent	0	0	0	0	1	0	2	1	0	0	0	0	4
Queen Anne's	0	0	0	0	4	2	0	0	1	0	0	0	7
Somerset	0	0	0	1	5	2	2	0	0	0	0	0	10
Talbot	1	1	1	1	0	0	1	0	5	0	0	0	10
Wicomico	1	1	1	3	1	4	0	10	8	1	0	0	30
Worcester	0	0	1	2	0	1	0	6	19	3	0	0	32
Area 4 Total	3	2	4	7	12	15	9	25	39	5	0	2	123
Anne Arundel	1	0	0	4	10	15	19	20	19	3	1	0	92
Calvert	0	0	0	0	1	0	0	0	2	0	0	0	3
Charles	2	0	0	1	2	1	2	5	6	0	0	3	22
Prince George's	2	0	5	9	45	52	45	28	33	12	0	7	238
St. Mary's	1	0	0	3	1	3	0	4	0	0	0	0	12
Area 5 Total	6	0	5	17	59	71	66	57	60	15	1	10	367
Out of State	0	0	0	0	0	0	0	0	1	0	0	0	1
Out of State Total	0	0	0	0	0	0	0	0	1	0	0	0	1
State Total	17	10	32	102	174	261	345	360	385	56	3	32	1777

Table 15
Intake Cases by Age and County of Jurisdiction for Males
FY 2004

Area	< 10	10	11	12	13	14	15	16	17	18	> 18	Age Unknown	Male Total
Baltimore City	96	82	178	395	772	1319	1953	2261	2453	66	4	153	9732
Area 1 Total	96	82	178	395	772	1319	1953	2261	2453	66	4	153	9732
Baltimore County	33	44	143	243	490	728	986	1079	1251	112	2	64	5175
Carroll	6	9	23	33	64	96	188	220	290	26	1	13	969
Harford	21	26	43	79	136	203	277	357	371	49	0	20	1582
Howard	6	5	17	38	82	152	220	314	348	50	3	13	1248
Area 2 Total	66	84	226	393	772	1179	1671	1970	2260	237	6	110	8974
Allegany	17	9	33	46	65	103	115	143	145	13	0	13	702
Frederick	18	14	23	107	111	157	182	229	321	34	1	16	1213
Garrett	17	1	4	8	19	22	30	40	48	4	1	6	200
Montgomery	17	16	40	97	189	423	614	739	920	170	5	47	3277
Washington	26	21	25	65	133	142	235	268	317	22	0	14	1268
Area 3 Total	95	61	125	323	517	847	1176	1419	1751	243	7	96	6660
Caroline	8	2	6	16	23	41	62	71	95	10	0	1	335
Cecil	10	9	29	47	73	129	135	173	189	14	0	23	831
Dorchester	8	15	19	38	49	55	120	96	119	6	0	5	530
Kent	3	3	0	8	15	23	50	46	39	4	0	0	191
Queen Anne's	6	7	9	25	36	47	55	56	89	4	0	7	341
Somerset	6	7	7	15	36	29	34	41	31	6	0	3	215
Talbot	3	5	16	30	30	40	51	71	108	9	1	3	367
Wicomico	22	22	58	86	158	184	197	194	193	22	1	18	1155
Worcester	4	5	16	13	31	77	123	221	477	60	1	20	1048
Area 4 Total	70	75	160	278	451	625	827	969	1340	135	3	80	5013
Anne Arundel	47	44	77	190	350	508	718	897	930	53	6	61	3881
Calvert	6	4	9	29	69	77	99	137	213	12	0	7	662
Charles	18	16	28	48	98	177	198	246	308	37	1	13	1188
Prince George's	39	47	63	127	312	575	854	876	767	157	6	74	3897
St. Mary's	8	4	30	33	59	74	113	161	157	14	0	11	664
Area 5 Total	118	115	207	427	888	1411	1982	2317	2375	273	13	166	10292
Out of State	0	0	0	1	0	2	6	2	3	3	0	0	17
Out of State Total	0	0	0	1	0	2	6	2	3	3	0	0	17
State Total	445	417	896	1817	3400	5383	7615	8938	10182	957	33	605	40688

Table 16
Intake Cases by Age and County of Jurisdiction for Females
FY 2004

Area	< 10	10	11	12	13	14	15	16	17	18	> 18	Age Unknown	Female Total
Baltimore City	20	18	60	125	231	342	393	393	381	18	0	63	2044
Area 1 Total	20	18	60	125	231	342	393	393	381	18	0	63	2044
Baltimore County	5	16	29	89	191	274	407	472	380	43	1	30	1937
Carroll	2	2	8	10	30	53	97	108	102	8	0	7	427
Harford	3	2	15	31	50	104	108	92	99	12	0	6	522
Howard	2	0	3	18	31	51	78	96	117	14	0	4	414
Area 2 Total	12	20	55	148	302	482	690	768	698	77	1	47	3300
Allegany	4	2	3	15	42	69	79	75	96	9	0	4	398
Frederick	5	1	7	17	54	82	92	100	112	6	0	2	478
Garrett	0	4	3	7	3	8	13	16	17	0	0	2	73
Montgomery	4	4	13	34	66	127	197	206	254	30	1	14	950
Washington	4	1	11	34	33	73	86	90	71	4	0	13	420
Area 3 Total	17	12	37	107	198	359	467	487	550	49	1	35	2319
Caroline	1	1	1	11	9	21	26	33	24	0	0	1	128
Cecil	4	0	7	21	28	40	47	64	54	11	0	9	285
Dorchester	3	4	1	7	21	44	59	61	42	3	0	3	248
Kent	2	0	5	2	15	6	18	8	29	1	0	0	86
Queen Anne's	0	1	0	8	6	24	31	30	32	2	0	2	136
Somerset	0	0	1	12	4	10	13	15	14	0	0	0	69
Talbot	4	2	5	9	8	21	16	26	34	2	0	4	131
Wicomico	5	5	22	54	70	122	88	92	77	11	1	6	553
Worcester	0	1	5	3	31	32	76	91	183	22	0	14	458
Area 4 Total	19	14	47	127	192	320	374	420	489	52	1	39	2094
Anne Arundel	8	9	23	66	137	271	278	288	248	19	0	20	1367
Calvert	1	1	2	1	20	44	50	64	82	5	0	5	275
Charles	3	4	6	18	19	62	100	101	117	4	1	3	438
Prince George's	2	10	21	33	83	141	200	179	194	28	1	49	941
St. Mary's	2	2	3	13	27	44	53	52	43	1	0	2	242
Area 5 Total	16	26	55	131	286	562	681	684	684	57	2	79	3263
Out of State	0	0	0	0	0	1	1	0	1	0	0	0	3
Out of State Total	0	0	0	0	0	1	1	0	1	0	0	0	3
State Total	84	90	254	638	1209	2066	2606	2752	2803	253	5	263	13023

Table 17
Number & Percent of Total Intake Cases by Referral Source
FY 2004

Referral Source	FY 2004	Percent
Police	43870	81.68
Maryland State Agencies	199	0.37
Citizen	6190	11.52
Waiver from Adult Criminal Court	19	0.04
Violation of Probation	49	0.09
Source not available	3380	6.29
Other	4	0.01
State Total	53711	100.00

Table 18
Intake Cases by Referral Source and County of Jurisdiction
FY 2004

Area	Police	Maryland State Agencies	Citizen	Waiver from Adult Criminal Court	DJS* Violation of Probation	Source Not available	Other	Jurisdiction Total
Baltimore City	10669	76	507	1	11	511	0	11775
Area 1 Total	10669	76	507	1	11	511	0	11775
Baltimore County	5325	0	66	0	8	1713	0	7112
Carroll	1013	81	247	2	0	55	0	1398
Harford	1970	0	45	1	4	84	0	2104
Howard	1639	0	15	0	1	7	0	1662
Area 2 Total	9947	81	373	3	13	1859	0	12276
Allegany	785	0	72	0	0	243	0	1100
Frederick	1479	11	164	1	3	33	0	1691
Garrett	171	3	39	0	0	60	0	273
Montgomery	4019	0	156	4	7	41	0	4227
Washington	1070	0	567	0	3	43	4	1687
Area 3 Total	7524	14	998	5	13	420	4	8978
Caroline	309	8	141	0	0	5	0	463
Cecil	1059	0	37	0	0	20	0	1116
Dorchester	495	1	278	0	0	4	0	778
Kent	186	1	89	0	0	1	0	277
Queen Anne's	197	0	271	0	0	9	0	477
Somerset	270	0	8	0	0	6	0	284
Talbot	392	0	105	0	0	1	0	498
Wicomico	1019	0	685	0	0	4	0	1708
Worcester	1403	0	76	0	0	27	0	1506
Area 4 Total	5330	10	1690	0	0	77	0	7107
Anne Arundel	5063	0	144	5	1	35	0	5248
Calvert	914	0	21	0	0	2	0	937
Charles	429	0	1154	1	3	39	0	1626
Prince George's	3588	18	812	4	5	411	0	4838
St. Mary's	404	0	490	0	3	9	0	906
Area 5 Total	10398	18	2621	10	12	496	0	13555
Out of State	2	0	1	0	0	17	0	20
Out of State Total	2	0	1	0	0	17	0	20
State Total	43870	199	6190	19	49	3380	4	53711

Table 19
Intake Cases - Offenses by Offense Type
FY 2002- FY 2004

Offenses	FY 2002	Percent	FY 2003	Percent	FY 2004	Percent	Percent Change 02 to '03
Person to Person Offenses							
AGGRAVATED ASSAULT	1035	1.9	1105	2.1	903	1.7	-18.3%
CHILD ABUSE	61	0.1	38	0.1	29	0.1	-23.7%
GENERAL SEX	237	0.4	193	0.4	209	0.4	8.3%
KIDNAPPING	11	0.0	12	0.0	8	0.0	-33.3%
MANSLAUGHTER	7	0.0	13	0.0	5	0.0	-61.5%
MURDER	47	0.1	39	0.1	28	0.1	-28.2%
ROBBERY	940	1.8	918	1.7	898	1.7	-2.2%
SEX FELONY	377	0.7	423	0.8	368	0.7	-13.0%
SIMPLE ASSAULT	10207	19.0	10664	20.1	11138	20.7	4.4%
Total Person-to-Person	12922	24.0	13405	25.3	13586	25.3	-167.5%
Property Offenses							
ARSON FELONY/MISDEMEANOR	399	0.7	384	0.7	479	0.9	24.7%
AUTO THEFT/UNAUTHORIZED USE	2334	4.4	2769	5.2	2599	4.8	-6.1%
BURGLARY/BREAKING & ENTERING	2443	4.6	2483	4.7	2440	4.5	-1.7%
CARJACKING	56	0.1	40	0.1	24	0.0	-40.0%
MALICIOUS DESTRUCTION	3794	7.1	3831	7.2	3511	6.5	-8.4%
TAMPERING	50	0.1	44	0.1	64	0.1	45.5%
THEFT/SHOPLIFTING	8040	15.0	7457	14.1	7807	14.5	4.7%
TRESPASSING	1169	2.2	1265	2.4	1475	2.7	16.6%
Total Property	18285	34.2	18273	34.4	18399	34.3	35.3%
Alcohol & Drug Related Offenses							
ALCOHOL VIOLATION	2892	5.4	2640	5.0	2362	4.4	-10.5%
GLUE SNIFFING & OTHER INHALANTS	10	0.0	6	0.0	2	0.0	-66.7%
NARCOTICS DISTRIBUTION	3355	6.3	3051	5.8	3497	6.5	14.6%
NARCOTICS POSSESSION	5213	9.7	4493	8.5	4682	8.7	4.2%
Total Alcohol & Drug Related	11470	21.4	10190	19.2	10543	19.6	-58.4%
CINS Offenses							
RUNAWAY	637	1.2	596	1.1	607	1.1	1.8%
TRAUNCY	204	0.4	203	0.4	146	0.3	-28.1%
UNGOVERNABLE	553	1.0	564	1.1	546	1.0	-3.2%
Total CINS	1394	2.6	1363	2.6	1299	2.4	-29.4%
Uncategorized Offenses							
BOMB THREAT	145	0.3	128	0.2	130	0.2	1.6%
CONSPIRACY	90	0.2	92	0.2	103	0.2	12.0%
DEADLY WEAPON	1144	2.1	945	1.8	1129	2.1	0.0%
DISTURBING THE PEACE	2428	4.5	2094	3.9	2193	4.1	0.0%
ESCAPE	39	0.1	49	0.1	43	0.1	0.0%
FALSE ALARM	39	0.1	44	0.1	49	0.1	11.4%
FALSE REPORT	213	0.4	216	0.4	204	0.4	-5.6%
FIREWORKS VIOLATION	72	0.1	62	0.1	69	0.1	11.3%
HANDGUN VIOLATIONS	102	0.2	97	0.2	98	0.2	1.0%
HARRASSMENT	208	0.4	241	0.5	194	0.4	-19.5%
LOITERING	284	0.5	515	1.0	476	0.9	-7.6%
MOTOR VEHICLE/TRAFFIC VIOLATIONS	1460	2.7	1532	2.9	1418	2.6	-7.4%
OTHER FELONY	120	0.2	127	0.2	137	0.3	7.9%
OTHER MISDEAMEANOR	470	0.9	854	1.6	950	1.8	11.2%
PAGER AT SCHOOL	6	0.0	2	0.0	0	0.0	-100.0%
RECKLESS ENDAGERMENT	62	0.1	92	0.2	100	0.2	8.7%
TELEPHONE MISUSE	149	0.3	135	0.3	146	0.3	8.1%
TOBACCO VIOLATIONS	1986	3.7	1944	3.6	1599	3.0	-17.7%
VIOLATION OF PROBATION	540	1.0	643	1.2	498	0.9	-22.6%
Total Uncategorized	9557	17.7	9812	18.3	9536	17.8	-194.3%
*Offenses Not Linked	614	1.1	459	0.9	348	0.6	-24.2%
State Total	54242	100.0	53502	100.0	53711	100.0	0.4%

Table 20
Intake Cases by Alleged Offenses & County of Jurisdiction
FY 2004

Area	AGGRAVATED ASSAULT	CHILD ABUSE	GENERAL SEX	KIDNAPING	MANSLAUGHTER	MURDER	ROBBERY	SEX FELONY	SIMPLE ASSAULT	ARSON FELONY/ MISDEMEANOR	AUTO THEFT/ UNAUTHORIZED USE	BURGLARY/B & E	CARJACKING	MALICIOUS DESTRUCTION	TAMPERING	THEFT/SHOPLIFTING	TRESPASSING
Baltimore City	351	0	33	2	0	18	263	49	2166	151	893	392	14	340	1	440	384
Area 1 Total	351	0	33	2	0	18	263	49	2166	151	893	392	14	340	1	440	384
Baltimore County	125	15	47	0	2	1	159	67	1797	40	350	405	3	621	5	1631	185
Carroll	12	1	3	0	0	1	1	8	194	7	20	46	0	103	1	165	44
Harford	14	1	5	0	0	0	15	7	480	27	34	109	0	160	7	313	46
Howard	19	1	8	0	0	0	22	11	337	14	85	69	0	102	4	254	67
Area 2 Total	170	18	63	0	2	2	197	93	2808	88	489	629	3	986	17	2363	342
Allegany	15	1	1	0	0	0	2	8	190	9	3	29	0	87	6	141	12
Frederick	16	0	3	0	0	0	10	10	293	22	24	52	0	131	2	273	27
Garrett	1	0	3	0	0	0	0	7	44	2	2	6	0	27	4	30	7
Montgomery	57	2	25	0	0	2	115	28	669	19	270	326	1	221	6	646	60
Washington	14	1	3	0	0	0	12	8	396	22	31	46	0	129	5	291	13
Area 3 Total	103	4	35	0	0	2	139	61	1592	74	330	459	1	595	23	1381	119
Caroline	5	0	1	0	0	0	2	5	117	9	18	19	0	40	3	38	5
Cecil	5	2	9	0	0	0	0	8	238	5	24	91	0	136	0	152	25
Dorchester	3	0	0	0	0	0	0	3	209	6	19	24	0	51	0	95	27
Kent	2	0	1	0	0	0	2	1	83	0	9	11	0	22	0	14	1
Queen Anne's	7	0	1	0	0	0	3	5	119	3	7	20	0	40	0	50	5
Somerset	9	0	2	0	0	0	0	8	72	0	3	14	0	37	0	29	3
Talbot	5	0	2	2	1	0	3	5	101	8	5	25	0	44	0	67	16
Wicomico	26	1	9	1	0	0	15	8	547	19	12	79	0	116	1	357	26
Worcester	4	0	7	0	0	0	3	8	110	9	16	45	0	50	1	198	8
Area 4 Total	66	3	32	3	1	0	28	51	1596	59	113	328	0	536	5	1000	116
Anne Arundel	56	2	21	2	0	1	100	26	1214	33	181	238	0	476	14	1080	236
Calvert	2	0	5	0	0	0	0	9	185	11	28	34	0	82	0	94	16
Charles	28	1	5	1	0	0	14	13	341	12	30	84	1	66	1	412	22
Prince George's	116	0	9	0	2	5	154	62	1005	37	501	220	5	323	3	911	226
St. Mary's	11	1	6	0	0	0	3	3	227	13	25	55	0	106	0	126	14
Area 5 Total	213	4	46	3	2	6	271	113	2972	106	765	631	6	1053	18	2623	514
Out of State	0	0	0	0	0	0	0	1	4	1	9	1	0	1	0	0	0
State Total	903	29	209	8	5	28	898	368	11138	479	2599	2440	24	3511	64	7807	1475

Table 20
Intake Cases by Alleged Offenses & County of Jurisdiction
FY 2004

Area	ALCOHOL VIOLATION	GLUE SNIFFING & OTHER INHALANTS	NARCOTICS DISTRIBUTION	NARCOTICS POSSESSION	RUNAWAY	TRAUNCY	UNGOVERNABLE	BOMB THREAT	CONSPIRACY	DEADLY WEAPON	DISTURBING THE PEACE	ESCAPE	FALSE ALARM	FALSE REPORT	FIREWORKS VIOLATION	HANDGUN VIOLATIONS	HARRASSMENT	LOITERING
Baltimore City	28	0	2713	1209	13	7	151	8	28	303	718	0	4	19	4	53	7	449
Area 1 Total	28	0	2713	1209	13	7	151	8	28	303	718	0	4	19	4	53	7	449
Baltimore County	72	0	146	592	3	1	20	36	5	150	201	7	7	26	1	7	21	4
Carroll	137	0	19	114	39	13	18	2	6	26	9	1	4	6	10	1	10	0
Harford	69	0	47	216	0	0	0	9	2	59	63	1	2	17	2	0	5	0
Howard	156	0	45	163	4	0	0	4	3	44	67	0	0	8	5	3	10	0
Area 2 Total	434	0	257	1085	46	14	38	51	16	279	340	9	13	57	18	11	46	4
Allegany	182	0	22	64	100	32	18	2	1	2	29	4	0	3	2	0	0	0
Frederick	51	0	34	164	69	35	23	5	0	18	45	3	1	4	5	0	5	0
Garrett	12	0	8	23	5	16	21	0	2	0	3	5	1	0	0	1	4	0
Montgomery	469	0	84	368	1	2	25	9	21	92	55	4	1	10	6	7	2	2
Washington	148	0	22	94	0	0	86	2	7	29	67	1	8	6	3	1	5	0
Area 3 Total	862	0	170	713	175	85	173	18	31	141	199	17	11	23	16	9	16	2
Caroline	9	0	5	38	51	0	0	0	0	6	27	1	0	2	0	2	4	0
Cecil	43	2	19	123	10	0	2	3	5	37	36	0	0	4	9	0	6	0
Dorchester	42	0	2	56	49	0	0	1	0	9	95	1	1	1	0	1	2	2
Kent	10	0	1	41	0	8	0	0	0	5	0	0	0	1	0	0	2	0
Queen Anne's	46	0	7	45	27	4	1	0	2	4	24	0	0	4	1	0	0	0
Somerset	10	0	3	10	9	0	2	1	0	2	8	0	1	3	0	0	2	0
Talbot	52	0	3	49	26	0	1	2	2	6	11	1	0	9	0	1	4	0
Wicomico	59	0	23	62	24	0	3	0	2	27	110	5	2	6	1	1	20	0
Worcester	433	0	17	178	21	2	2	7	0	11	64	0	1	2	0	0	1	0
Area 4 Total	704	2	80	602	217	14	11	14	11	107	375	8	5	32	11	5	41	2
Anne Arundel	114	0	92	482	0	0	5	9	1	118	236	4	8	22	7	6	43	14
Calvert	51	0	25	139	127	0	0	8	0	18	24	0	1	2	2	0	3	0
Charles	66	0	30	114	3	0	0	4	14	32	70	1	3	8	0	0	1	0
Prince George's	42	0	113	257	5	25	168	11	1	119	190	4	4	38	7	14	37	5
St. Mary's	61	0	15	81	21	1	0	7	0	12	41	0	0	3	4	0	0	0
Area 5 Total	334	0	275	1073	156	26	173	39	16	299	561	9	16	73	20	20	84	19
Out of State	0	0	2	0	0	0	0	0	1	0	0	0	0	0	0	0	0	0
State Total	2362	2	3497	4682	607	146	546	130	103	1129	2193	43	49	204	69	98	194	476

**Table 20
Intake Cases by Alleged Offenses & County of Jurisdiction
FY 2004**

Area	OTHER FELONY	PAGER AT SCHOOL	RECKLESS ENDANGERMENT	TELEPHONE MISUSE	TOBACCO VIOLATIONS	MOTOR VEHICLE/TRAFFIC VIOLATIONS	VIOLATION OF PROBATION	OTHER MISDEAMEANOR	OFFENSE NOT LINKED*	JURISDICTION TOTAL
Baltimore City	15	0	8	2	0	104	132	242	62	11776
Area 1 Total	15	0	8	2	0	104	132	242	62	11776
Baltimore County	17	0	7	33	31	154	37	50	31	7112
Carroll	13	0	3	19	142	55	24	8	111	1396
Harford	0	0	4	9	223	57	73	24	4	2104
Howard	2	0	4	8	50	80	4	8	1	1662
Area 2 Total	32	0	18	69	446	346	138	90	147	12274
Allegany	2	0	0	2	53	30	4	39	5	1100
Frederick	2	0	5	9	174	68	85	18	5	1691
Garrett	1	0	0	1	25	4	0	5	3	273
Montgomery	21	0	2	7	93	345	23	118	13	4227
Washington	3	0	4	1	89	70	32	28	11	1688
Area 3 Total	29	0	11	20	434	517	144	208	37	8979
Caroline	0	0	1	2	25	8	1	8	11	463
Cecil	2	0	5	3	36	26	17	7	26	1116
Dorchester	2	0	5	2	19	22	1	16	12	778
Kent	0	0	2	2	15	3	0	39	2	277
Queen Anne's	0	0	1	2	22	15	4	6	2	477
Somerset	1	0	0	1	40	1	3	8	2	284
Talbot	4	0	0	0	19	22	0	2	0	498
Wicomico	4	0	3	0	81	18	2	36	2	1708
Worcester	2	0	6	0	119	34	6	136	5	1506
Area 4 Total	15	0	23	12	376	149	34	258	62	7107
Anne Arundel	4	0	25	27	115	153	9	66	8	5248
Calvert	1	0	1	6	7	38	0	15	3	937
Charles	5	0	5	5	144	39	29	13	9	1626
Prince George's	33	0	9	2	47	53	3	56	16	4838
St. Mary's	3	0	0	3	30	19	9	2	4	906
Area 5 Total	46	0	40	43	343	302	50	152	40	13555
Out of State	0	0	0	0	0	0	0	0	0	20
State Total	137	0	100	146	1599	1418	498	950	348*	53711

* For 348 complaints, offenses are not known due to linkage problems in ASSIST.

Table 21
Intake Cases by Alleged Offenses and County of Jurisdiction for African American Youth
FY 2004

Area	AGGRAVATED ASSAULT	CHILD ABUSE	GENERAL SEX	KIDNAPPING	MANSLAUGHTER	MURDER	ROBBERY	SEX FELONY	SIMPLE ASSAULT	ARSON FELONY/ MISDEMEANOR	AUTO THEFT/ UNAUTHORIZED USE	BURGLARY/B & E	CARJACKING	MALICIOUS DESTRUCTION	TAMPERING	THEFT/ SHOPLIFTING	TRESPASSING
Baltimore City	323	0	31	2	0	18	251	41	1996	110	812	347	14	281	1	378	373
Area 1 Total	323	0	31	2	0	18	251	41	1996	110	812	347	14	281	1	378	373
Baltimore County	77	12	14	0	0	1	120	32	1051	20	212	210	3	205	3	1152	114
Carroll	1	0	0	0	0	1	0	0	45	0	5	1	0	13	0	8	5
Harford	4	0	0	0	0	0	10	2	188	6	14	46	0	58	6	124	16
Howard	11	0	4	0	0	0	17	5	219	4	58	33	0	44	3	122	42
Area 2 Total	93	12	18	0	0	2	147	39	1503	30	289	290	3	320	12	1406	177
Allegany	3	0	0	0	0	0	1	0	43	0	0	1	0	16	0	21	3
Frederick	4	0	0	0	0	0	4	3	113	3	4	13	0	24	0	77	4
Garrett	1	0	0	0	0	0	0	0	7	0	0	0	0	0	0	1	0
Montgomery	32	1	14	0	0	1	83	11	409	6	141	161	1	83	6	369	20
Washington	3	0	0	0	0	0	6	0	102	2	6	5	0	18	1	49	3
Area 3 Total	43	1	14	0	0	1	94	14	674	11	151	180	1	141	7	517	30
Caroline	2	0	0	0	0	0	2	2	61	2	5	6	0	11	3	11	4
Cecil	0	0	2	0	0	0	0	0	28	1	1	8	0	5	0	15	2
Dorchester	3	0	0	0	0	0	0	3	147	3	15	19	0	21	0	77	19
Kent	0	0	0	0	0	0	0	1	57	0	6	1	0	7	0	3	0
Queen Anne's	2	0	1	0	0	0	3	3	31	2	3	6	0	1	0	9	1
Somerset	7	0	1	0	0	0	0	2	48	0	0	3	0	16	0	17	2
Talbot	3	0	1	0	0	0	1	2	44	0	0	14	0	22	0	40	12
Wicomico	21	1	3	1	0	0	14	4	396	7	5	51	0	51	1	221	26
Worcester	3	0	0	0	0	0	3	6	58	2	5	6	0	4	0	58	5
Area 4 Total	41	1	8	1	0	0	23	23	870	17	40	114	0	138	4	451	71
Anne Arundel	33	0	12	0	0	0	68	8	627	6	87	99	0	126	4	528	108
Calvert	0	0	2	0	0	0	0	2	68	5	11	5	0	11	0	33	3
Charles	19	1	3	0	0	0	13	7	211	4	25	60	1	21	1	282	13
Prince George's	106	0	7	0	2	4	140	55	909	27	461	180	5	227	2	786	156
St. Mary's	7	1	2	0	0	0	3	1	103	4	11	11	0	18	0	63	7
Area 5 Total	165	2	26	0	2	4	224	73	1918	46	595	355	6	403	7	1692	287
Out of State	0	0	0	0	0	0	0	0	2	0	9	0	0	0	0	0	0
State Total	665	16	97	3	2	25	739	190	6963	214	1896	1286	24	1283	31	4444	938

**Table 21
Intake Cases by Alleged Offenses and County of Jurisdiction for African American Youth
FY 2004**

Area	ALCOHOL VIOLATION	GLUE SNIFFING & OTHER INHALANTS	NARCOTICS DISTRIBUTION	NARCOTICS POSSESSION	RUNAWAY	TRAUNCY	UNGOVERNABLE	BOMB THREAT	CONSPIRACY	DEADLY WEAPON	DISTURBING THE PEACE	ESCAPE	FALSE ALARM	FALSE REPORT	FIREWORKS VIOLATION	HANDGUN VIOLATIONS	HARRASSMENT	LOITERING
Baltimore City	25	0	2653	1109	10	7	144	8	28	287	682	0	3	17	4	52	4	434
Area 1 Total	25	0	2653	1109	10	7	144	8	28	287	682	0	3	17	4	52	4	434
Baltimore County	3	0	81	188	2	0	4	7	1	93	107	6	4	10	0	4	11	4
Carroll	2	0	1	4	2	0	1	0	0	4	4	1	0	0	1	0	0	0
Harford	7	0	30	43	0	0	0	1	1	17	24	0	0	4	0	0	1	0
Howard	15	0	23	43	1	0	0	0	2	21	43	0	0	3	1	3	2	0
Area 2 Total	27	0	135	278	5	0	5	8	4	135	178	7	4	17	2	7	14	4
Allegany	16	0	9	3	28	5	4	0	0	0	6	1	0	0	0	0	0	0
Frederick	4	0	16	21	27	6	3	0	0	1	12	1	0	1	1	0	0	0
Garrett	0	0	0	0	0	0	0	0	0	0	0	4	0	0	0	0	0	0
Montgomery	67	0	39	120	1	0	11	8	14	42	28	1	0	5	1	4	1	2
Washington	7	0	7	11	0	0	12	0	1	7	20	0	5	0	0	0	0	0
Area 3 Total	94	0	71	155	56	11	30	8	15	50	66	7	5	6	2	4	1	2
Caroline	0	0	5	8	8	0	0	0	0	3	15	1	0	0	0	2	0	0
Cecil	1	0	4	8	0	0	0	0	0	4	2	0	0	0	0	0	0	0
Dorchester	2	0	2	19	15	0	0	0	0	1	69	0	1	1	0	1	0	2
Kent	0	0	0	7	0	3	0	0	0	1	0	0	0	0	0	0	0	0
Queen Anne's	4	0	4	3	4	1	0	0	0	0	13	0	0	0	0	0	0	0
Somerset	2	0	2	6	4	0	2	0	0	0	5	0	1	0	0	0	1	0
Talbot	5	0	1	9	16	0	1	0	0	2	9	0	0	6	0	0	1	0
Wicomico	11	0	14	20	11	0	0	0	1	15	93	3	0	5	0	1	7	0
Worcester	22	0	6	22	1	0	0	3	0	2	22	0	1	0	0	0	1	0
Area 4 Total	47	0	38	102	59	4	3	3	1	28	228	4	3	12	0	4	10	2
Anne Arundel	10	0	52	100	0	0	0	5	1	38	105	2	2	7	1	3	20	7
Calvert	7	0	14	22	33	0	0	0	0	8	10	0	1	0	0	0	1	0
Charles	12	0	15	36	0	0	0	4	11	18	50	0	1	5	0	0	0	0
Prince George's	20	0	102	208	2	20	142	10	1	89	168	4	4	31	5	13	34	5
St. Mary's	6	0	9	23	11	0	0	4	0	4	22	0	0	1	0	0	0	0
Area 5 Total	55	0	192	389	46	20	142	23	13	157	355	6	8	44	6	16	55	12
Out of State	0	0	2	0	0	0	0	0	1	0	0	0	0	0	0	0	0	0
State Total	248	0	3091	2033	176	42	324	50	62	657	1509	24	23	96	14	83	84	454

Table 21
Intake Cases by Alleged Offenses and County of Jurisdiction for African American Youth
FY 2004

Area	OTHER FELONY	PAGER AT SCHOOL	RECKLESS ENDANGERMENT	TELEPHONE MISUSE	TOBACCO VIOLATIONS	MOTOR VEHICLE/TRAFFIC VIOLATIONS	VIOLATION OF PROBATION	OTHER MISDEAMEANOR	OFFENSES NOT LINKED*	JURISDICTION TOTAL
Baltimore City	13	0	7	2	0	93	129	221	57	10967
Area 1 Total	13	0	7	2	0	93	129	221	57	10967
Baltimore County	7	0	4	16	6	50	14	22	16	3886
Carroll	2	0	0	0	2	2	0	0	8	113
Harford	0	0	0	6	20	11	28	10	1	678
Howard	2	0	1	5	11	17	1	4	0	760
Area 2 Total	11	0	5	27	39	80	43	36	25	5437
Allegany	1	0	0	0	6	1	1	5	0	174
Frederick	0	0	0	2	13	9	32	4	3	405
Garrett	0	0	0	0	0	0	0	0	0	13
Montgomery	10	0	0	4	27	83	16	12	4	1838
Washington	0	0	1	0	5	12	5	7	1	296
Area 3 Total	11	0	1	6	51	105	54	28	8	2726
Caroline	0	0	0	2	1	2	1	3	2	162
Cecil	0	0	0	0	0	0	1	0	3	85
Dorchester	2	0	1	0	4	6	0	10	8	451
Kent	0	0	0	1	2	0	0	22	0	111
Queen Anne`s	0	0	1	1	1	3	1	0	0	98
Somerset	0	0	0	1	6	0	1	6	0	133
Talbot	0	0	0	0	3	3	0	1	0	196
Wicomico	1	0	2	0	12	9	1	22	2	1032
Worcester	0	0	1	0	9	6	5	8	0	259
Area 4 Total	3	0	5	5	38	29	10	72	15	2527
Anne Arundel	1	0	4	9	23	32	2	19	3	2152
Calvert	0	0	0	1	1	11	0	2	1	252
Charles	2	0	1	0	31	17	18	5	8	895
Prince George`s	28	0	8	0	26	40	2	43	13	4085
St. Mary`s	1	0	0	0	7	3	5	2	2	331
Area 5 Total	32	0	13	10	88	103	27	71	27	7715
Out of State	0	0	0	0	0	0	0	0	0	14
State Total	70		31	50	216	410	263	428	132*	29386

* For 132 complaints, offenses are not known due to linkage problems in ASSIST.

Table 22
Intake Cases by Alleged Offenses and County of Juidisdiction for Caucasian Youth
FY 2004

Area	AGGRAVATED ASSAULT	CHILD ABUSE	GENERAL SEX	KIDNAPPING	MANSLAUGHTER	MURDER	ROBBERY	SEX FELONY	SIMPLE ASSAULT	ARSON FELONY/ MISDEMEANOR	AUTO THEFT/ UNAUTHORIZED USE	BURGLARY/B & E	CARJACKING	MALICIOUS DESTRUCTION	TAMPERING	THEFT / SHOPLIFTING	TRESPASSING
Baltimore City	26	0	2	0	0	0	10	7	152	41	74	44	0	58	0	60	9
Area 1 Total	26	0	2	0	0	0	10	7	152	41	74	44	0	58	0	60	9
Baltimore County	47	3	33	0	2	0	38	35	709	20	135	193	0	408	2	454	70
Carroll	10	1	3	0	0	0	1	8	148	7	15	45	0	90	1	157	38
Harford	10	1	5	0	0	0	5	5	282	21	20	61	0	101	0	178	29
Howard	7	1	2	0	0	0	3	6	110	7	24	29	0	51	1	112	19
Area 2 Total	74	6	43	0	2	0	47	54	1249	55	194	328	0	650	4	901	156
Allegany	11	1	1	0	0	0	1	8	146	7	3	28	0	62	6	119	9
Frederick	10	0	2	0	0	0	4	7	159	17	14	37	0	104	2	174	23
Garrett	0	0	3	0	0	0	0	7	37	2	2	6	0	26	4	29	6
Montgomery	16	1	4	0	0	1	18	5	163	10	53	84	0	99	0	161	23
Washington	10	1	3	0	0	0	6	8	264	19	23	38	0	104	4	233	9
Area 3 Total	47	3	13	0	0	1	29	35	769	55	95	193	0	395	16	716	70
Caroline	3	0	1	0	0	0	0	3	55	7	13	13	0	29	0	27	1
Cecil	5	2	7	0	0	0	0	8	204	4	21	79	0	129	0	134	23
Dorchester	0	0	0	0	0	0	0	0	62	3	4	5	0	30	0	18	8
Kent	2	0	1	0	0	0	2	0	26	0	3	10	0	15	0	11	1
Queen Anne`s	5	0	0	0	0	0	0	2	84	1	3	14	0	38	0	41	4
Somerset	2	0	1	0	0	0	0	4	22	0	3	11	0	18	0	12	1
Talbot	2	0	1	2	1	0	2	3	55	6	5	11	0	22	0	25	4
Wicomico	5	0	5	0	0	0	0	4	137	12	7	27	0	62	0	135	0
Worcester	1	0	7	0	0	0	0	1	49	6	11	39	0	44	1	137	3
Area 4 Total	25	2	23	2	1	0	4	25	694	39	70	209	0	387	1	540	45
Anne Arundel	22	2	9	2	0	1	31	18	572	25	93	131	0	343	10	524	124
Calvert	2	0	3	0	0	0	0	7	117	6	17	29	0	70	0	61	13
Charles	9	0	2	1	0	0	1	6	127	8	5	22	0	43	0	128	9
Prince George`s	4	0	1	0	0	0	10	4	69	7	22	35	0	41	0	80	51
St. Mary`s	4	0	4	0	0	0	0	2	121	9	14	41	0	87	0	62	7
Area 5 Total	41	2	19	3	0	1	42	37	1006	55	151	258	0	584	10	855	204
Out of State	0	0	0	0	0	0	0	1	1	1	0	1	0	1	0	0	0
State Total	213	13	100	5	3	2	132	159	3871	246	584	1033	0	2075	31	3072	484

Table 22
Intake Cases by Alleged Offenses and County of Juidisdiction for Caucasian Youth
FY 2004

Area	ALCOHOL VIOLATION	GLUE SNIFFING & OTHER INHALANTS	NARCOTICS DISTRIBUTION	NARCOTICS POSSESSION	RUNAWAY	TRAUNCY	UNGOVERNABLE	BOMB THREAT	CONSPIRACY	DEADLY WEAPON	DISTURBING THE PEACE	ESCAPE	FALSE ALARM	FALSE REPORT	FIREWORKS VIOLATION	HANDGUN VIOLATIONS	HARRASSMENT	LOITERING
Baltimore City	3	0	50	94	3	0	6	0	0	11	31	0	1	2	0	0	3	12
Area 1 Total	3	0	50	94	3	0	6	0	0	11	31	0	1	2	0	0	3	12
Baltimore County	69	0	63	393	1	1	16	29	4	54	93	1	3	16	1	2	10	0
Carroll	134	0	18	110	36	12	17	2	6	22	5	0	4	6	9	1	10	0
Harford	60	0	17	168	0	0	0	8	1	40	38	1	2	13	2	0	4	0
Howard	134	0	17	113	0	0	0	4	1	18	21	0	0	5	4	0	8	0
Area 2 Total	397	0	115	784	37	13	33	43	12	134	157	2	9	40	16	3	32	0
Allegany	165	0	13	59	71	27	14	2	1	2	23	3	0	3	2	0	0	0
Frederick	46	0	18	138	38	27	18	5	0	17	31	1	1	3	4	0	5	0
Garrett	12	0	8	23	5	16	21	0	2	0	3	1	1	0	0	1	4	0
Montgomery	349	0	30	188	0	2	2	0	3	29	14	3	0	1	4	2	1	0
Washington	138	0	13	82	0	0	67	2	5	22	45	1	3	6	2	1	5	0
Area 3 Total	710	0	82	490	114	72	122	9	11	70	116	9	5	13	12	4	15	0
Caroline	9	0	0	30	43	0	0	0	0	3	12	0	0	2	0	0	4	0
Cecil	42	2	15	112	10	0	2	3	5	32	33	0	0	4	9	0	6	0
Dorchester	40	0	0	35	33	0	0	1	0	8	26	1	0	0	0	0	2	0
Kent	9	0	1	33	0	4	0	0	0	4	0	0	0	1	0	0	2	0
Queen Anne's	42	0	3	42	23	3	1	0	2	4	11	0	0	4	1	0	0	0
Somerset	8	0	1	3	5	0	0	1	0	2	2	0	0	3	0	0	1	0
Talbot	47	0	2	39	8	0	0	2	2	4	2	0	0	3	0	1	3	0
Wicomico	47	0	9	41	13	0	3	0	1	11	16	2	2	1	1	0	13	0
Worcester	401	0	9	154	20	2	2	4	0	9	41	0	0	2	0	0	0	0
Area 4 Total	645	2	40	489	155	9	8	11	10	77	143	3	2	20	11	1	31	0
Anne Arundel	102	0	40	376	0	0	5	3	0	76	125	2	6	15	5	3	23	7
Calvert	44	0	11	117	93	0	0	8	0	10	14	0	0	2	2	0	2	0
Charles	53	0	13	78	3	0	0	0	2	13	18	1	1	3	0	0	1	0
Prince George's	22	0	9	41	2	5	20	0	0	24	15	0	0	5	2	0	1	0
St. Mary's	55	0	6	56	10	1	0	3	0	8	19	0	0	2	4	0	0	0
Area 5 Total	276	0	79	668	108	6	25	14	2	131	191	3	7	27	13	3	27	7
Out of State	0	0	0	0	0	0	0	0	0	0	0	0	0	0	0	0	0	0
State Total	2031	2	366	2525	417	100	194	77	35	423	638	17	24	102	52	11	108	19

**Table 22
Intake Cases by Alleged Offenses and County of Juidisdiction for Caucasian Youth
FY 2004**

Area	OTHER FELONY	PAGER AT SCHOOL	RECKLESS ENDAGERMENT	TELEPHONE MISUSE	TOBACCO VIOLATIONS	MOTOR VEHICLE/TRAFFIC VIOLATIONS	VIOLATION OF PROBATION	OTHER MISDEAMEANOR	OFFENSE NOT LINKED	JURISDICTION TOTAL
Baltimore City	2	0	1	0	0	7	2	18	4	733
Area 1 Total	2	0	1	0	0	7	2	18	4	733
Baltimore County	9	0	3	17	25	101	22	28	16	3126
Carroll	11	0	3	19	139	52	23	8	102	1273
Harford	0	0	4	3	199	46	44	14	3	1385
Howard	0	0	3	3	38	56	2	3	1	803
Area 2 Total	20	0	13	42	401	255	91	53	122	6587
Allegany	1	0	0	2	47	29	3	34	5	908
Frederick	1	0	5	7	158	54	52	14	2	1198
Garrett	1	0	0	1	25	4	0	5	3	258
Montgomery	5	0	1	3	58	190	4	89	6	1622
Washington	3	0	3	1	78	55	25	19	9	1307
Area 3 Total	11	0	9	14	366	332	84	161	25	5293
Caroline	0	0	1	0	24	6	0	5	9	300
Cecil	2	0	5	3	35	25	16	7	22	1006
Dorchester	0	0	4	2	14	16	1	6	4	323
Kent	0	0	2	1	13	3	0	16	2	162
Queen Anne`s	0	0	0	1	21	11	3	6	2	372
Somerset	1	0	0	0	34	0	2	2	2	141
Talbot	4	0	0	0	16	19	0	1	0	292
Wicomico	3	0	1	0	66	9	1	12	0	646
Worcester	2	0	5	0	108	25	1	126	5	1215
Area 4 Total	12	0	18	7	331	114	24	181	46	4457
Anne Arundel	3	0	21	18	91	119	7	46	4	3004
Calvert	1	0	1	5	6	26	0	13	2	682
Charles	3	0	4	5	113	20	8	8	1	709
Prince George`s	4	0	1	1	20	8	0	9	2	515
St. Mary`s	2	0	0	2	23	15	4	0	2	563
Area 5 Total	13	0	27	31	253	188	19	76	11	5473
Out of State	0	0	0	0	0	0	0	0	0	5
State Total	58	0	68	94	1351	896	220	489	208	22548

**Table 23
Intake Cases by Alleged Offenses and County of Jurisdiction for Other Youth
FY 2004**

Area	AGGRAVATED ASSAULT	CHILD ABUSE	GENERAL SEX	KIDNAPPING	MANSLAUGHTER	MURDER	ROBBERY	SEX FELONY	SIMPLE ASSAULT	ARSON FELONY/ MISDEMEANOR	AUTO THEFT/ UNAUTHORIZED USE	BURGLARY/B & E	CARJACKING	MALICIOUS DESTRUCTION	TAMPERING	THEFT/SHOPLIFTING	TRESPASSING
Baltimore City	2	0	0	0	0	0	2	1	18	0	7	1	0	1	0	2	2
Area 1 Total	2	0	0	0	0	0	2	1	18	0	7	1	0	1	0	2	2
Baltimore County	1	0	0	0	0	0	1	0	37	0	3	2	0	8	0	25	1
Carroll	1	0	0	0	0	0	0	0	1	0	0	0	0	0	0	0	1
Harford	0	0	0	0	0	0	0	0	10	0	0	2	0	1	1	11	1
Howard	1	0	2	0	0	0	2	0	8	3	3	7	0	7	0	20	6
Area 2 Total	3	0	2	0	0	0	3	0	56	3	6	11	0	16	1	56	9
Allegany	1	0	0	0	0	0	0	0	1	2	0	0	0	9	0	1	0
Frederick	2	0	1	0	0	0	2	0	21	2	6	2	0	3	0	22	0
Garrett	0	0	0	0	0	0	0	0	0	0	0	0	0	1	0	0	1
Montgomery	9	0	7	0	0	0	14	12	97	3	76	81	0	39	0	116	17
Washington	1	0	0	0	0	0	0	0	30	1	2	3	0	7	0	9	1
Area 3 Total	13	0	8	0	0	0	16	12	149	8	84	86	0	59	0	148	19
Caroline	0	0	0	0	0	0	0	0	1	0	0	0	0	0	0	0	0
Cecil	0	0	0	0	0	0	0	0	6	0	2	4	0	2	0	3	0
Dorchester	0	0	0	0	0	0	0	0	0	0	0	0	0	0	0	0	0
Kent	0	0	0	0	0	0	0	0	0	0	0	0	0	0	0	0	0
Queen Anne's	0	0	0	0	0	0	0	0	4	0	1	0	0	1	0	0	0
Somerset	0	0	0	0	0	0	0	2	2	0	0	0	0	3	0	0	0
Talbot	0	0	0	0	0	0	0	0	2	2	0	0	0	0	0	2	0
Wicomico	0	0	1	0	0	0	1	0	14	0	0	1	0	3	0	1	0
Worcester	0	0	0	0	0	0	0	1	3	1	0	0	0	2	0	3	0
Area 4 Total	0	0	1	0	0	0	1	3	32	3	3	5	0	11	0	9	0
Anne Arundel	1	0	0	0	0	0	1	0	15	2	1	8	0	7	0	28	4
Calvert	0	0	0	0	0	0	0	0	0	0	0	0	0	1	0	0	0
Charles	0	0	0	0	0	0	0	0	3	0	0	2	0	2	0	2	0
Prince George's	6	0	1	0	0	1	4	3	27	3	18	5	0	55	1	45	19
St. Mary's	0	0	0	0	0	0	0	0	3	0	0	3	0	1	0	1	0
Area 5 Total	7	0	1	0	0	1	5	3	48	5	19	18	0	66	1	76	23
Out of State	0	0	0	0	0	0	0	0	1	0	0	0	0	0	0	0	0
State Total	25	0	12	0	0	1	27	19	304	19	119	121	0	153	2	291	53

**Table 23
Intake Cases by Alleged Offenses and County of Jurisdiction for Other Youth
FY 2004**

Area	ALCOHOL VIOLATION	GLUE SNIFFING & OTHER INHALANTS	NARCOTICS DISTRIBUTION	NARCOTICS POSSESSION	RUNAWAY	TRAUNCY	UNGOVERNABLE	BOMB THREAT	CONSPIRACY	DEADLY WEAPON	DISTURBING THE PEACE	ESCAPE	FALSE ALARM	FALSE REPORT	FIREWORKS VIOLATION	HANDGUN VIOLATIONS	HARRASSMENT	LOITERING
Baltimore City	0	0	10	6	0	0	1	0	0	5	5	0	0	0	0	1	0	3
Area 1 Total	0	0	10	6	0	0	1	0	0	5	5	0	0	0	0	1	0	3
Baltimore County	0	0	2	11	0	0	0	0	0	3	1	0	0	0	0	1	0	0
Carroll	1	0	0	0	1	1	0	0	0	0	0	0	0	0	0	0	0	0
Harford	2	0	0	5	0	0	0	0	0	2	1	0	0	0	0	0	0	0
Howard	7	0	5	7	3	0	0	0	0	5	3	0	0	0	0	0	0	0
Area 2 Total	10	0	7	23	4	1	0	0	0	10	5	0	0	0	0	1	0	0
Allegany	1	0	0	2	1	0	0	0	0	0	0	0	0	0	0	0	0	0
Frederick	1	0	0	5	4	2	2	0	0	0	2	1	0	0	0	0	0	0
Garrett	0	0	0	0	0	0	0	0	0	0	0	0	0	0	0	0	0	0
Montgomery	53	0	15	60	0	0	12	1	4	21	13	0	1	4	1	1	0	0
Washington	3	0	2	1	0	0	7	0	1	0	2	0	0	0	1	0	0	0
Area 3 Total	58	0	17	68	5	2	21	1	5	21	17	1	1	4	2	1	0	0
Caroline	0	0	0	0	0	0	0	0	0	0	0	0	0	0	0	0	0	0
Cecil	0	0	0	3	0	0	0	0	0	1	1	0	0	0	0	0	0	0
Dorchester	0	0	0	2	1	0	0	0	0	0	0	0	0	0	0	0	0	0
Kent	1	0	0	1	0	1	0	0	0	0	0	0	0	0	0	0	0	0
Queen Anne's	0	0	0	0	0	0	0	0	0	0	0	0	0	0	0	0	0	0
Somerset	0	0	0	1	0	0	0	0	0	0	1	0	0	0	0	0	0	0
Talbot	0	0	0	1	2	0	0	0	0	0	0	1	0	0	0	0	0	0
Wicomico	1	0	0	1	0	0	0	0	0	1	1	0	0	0	0	0	0	0
Worcester	10	0	2	2	0	0	0	0	0	0	1	0	0	0	0	0	0	0
Area 4 Total	12	0	2	11	3	1	0	0	0	2	4	1	0	0	0	0	0	0
Anne Arundel	2	0	0	6	0	0	0	1	0	4	6	0	0	0	1	0	0	0
Calvert	0	0	0	0	1	0	0	0	0	0	0	0	0	0	0	0	0	0
Charles	1	0	2	0	0	0	0	0	1	1	2	0	1	0	0	0	0	0
Prince George's	0	0	2	8	1	0	6	1	0	6	7	0	0	2	0	1	2	0
St. Mary's	0	0	0	2	0	0	0	0	0	0	0	0	0	0	0	0	0	0
Area 5 Total	3	0	4	16	2	0	6	2	1	11	15	0	1	2	1	1	2	0
Out of State	0	0	0	0	0	0	0	0	0	0	0	0	0	0	0	0	0	0
State Total	83	0	40	124	14	4	28	3	6	49	46	2	2	6	3	4	2	3

**Table 23
Intake Cases by Alleged Offenses and County of Jurisdiction for Other Youth
FY 2004**

Area	OTHER FELONY	PAGER AT SCHOOL	RECKLESS ENDAGERMENT	TELEPHONE MISUSE	TOBACCO VIOLATIONS	MOTER VEHICLE/TRAFFIC VIOLATIONS	VIOLATION OF PROBATION	OTHER MISDEAMEANOR	OFFENSE NOT LINKED	JURISDICTION TOTAL
Baltimore City	0	0	0	0	0	4	1	3	1	76
Area 1 Total	0	0	0	0	0	4	1	3	1	76
Baltimore County	1	0	0	0	0	3	1	0	0	101
Carroll	0	0	0	0	1	1	1	0	0	9
Harford	0	0	0	0	4	0	1	0	0	41
Howard	0	0	0	0	1	7	1	1	0	99
Area 2 Total	1	0	0	0	6	11	4	1	0	250
Allegany	0	0	0	0	0	0	0	0	0	18
Frederick	1	0	0	0	3	5	1	0	0	88
Garrett	0	0	0	0	0	0	0	0	0	2
Montgomery	6	0	1	0	8	72	3	17	3	767
Washington	0	0	0	0	6	3	2	2	1	85
Area 3 Total	7	0	1	0	17	80	6	19	4	960
Caroline	0	0	0	0	0	0	0	0	0	1
Cecil	0	0	0	0	1	1	0	0	1	25
Dorchester	0	0	0	0	1	0	0	0	0	4
Kent	0	0	0	0	0	0	0	1	0	4
Queen Anne`s	0	0	0	0	0	1	0	0	0	7
Somerset	0	0	0	0	0	0	0	0	0	10
Talbot	0	0	0	0	0	1	0	0	0	10
Wicomico	0	0	0	0	3	0	0	2	0	30
Worcester	0	0	0	0	2	3	0	2	0	32
Area 4 Total	0	0	0	0	7	6	0	5	1	123
Anne Arundel	0	0	0	0	1	2	0	1	1	92
Calvert	0	0	0	0	0	1	0	0	0	3
Charles	0	0	0	0	0	2	3	0	0	22
Prince George`s	1	0	0	1	1	5	1	4	1	238
St. Mary`s	0	0	0	1	0	1	0	0	0	12
Area 5 Total	1	0	0	2	2	11	4	5	2	367
Out of State	0	0	0	0	0	0	0	0	0	1
State Total	9	0	1	2	32	112	15	33	8	1777

Table 24
Intake Cases by Alleged Offenses and County of Jurisdiction for Males
FY 2004

Area	AGGRAVATED ASSAULT	CHILD ABUSE	GENERAL SEX	KIDNAPPING	MANSLAUGHTER	MURDER	ROBBERY	SEX FELONY	SIMPLE ASSAULT	ARSON FELONY/ MISDEMEANOR	AUTO THEFT/ UNAUTHORIZED USE	BURGLARY/B & E	CARJACKING	MALICIOUS DESTRUCTION	TAMPERING	THEFT/ SHOPLIFTING	TRESPASSING
Baltimore City	242	0	31	1	0	14	237	48	1421	121	799	355	14	261	1	345	333
Area 1 Total	242	0	31	1	0	14	237	48	1421	121	799	355	14	261	1	345	333
Baltimore County	100	15	44	0	2	1	145	64	1190	35	305	372	3	547	5	873	158
Carroll	6	1	3	0	0	1	1	8	138	6	13	37	0	90	1	96	31
Harford	9	1	5	0	0	0	15	7	309	26	28	96	0	145	6	215	32
Howard	17	0	8	0	0	0	20	11	233	11	67	62	0	90	4	176	55
Area 2 Total	132	17	60	0	2	2	181	90	1870	78	413	567	3	872	16	1360	276
Allegany	13	0	1	0	0	0	2	8	135	9	3	19	0	73	4	86	10
Frederick	13	0	2	0	0	0	10	10	218	21	14	40	0	118	2	154	18
Garrett	1	0	3	0	0	0	0	7	34	2	2	6	0	25	1	22	6
Montgomery	47	2	24	0	0	2	112	27	443	17	234	296	1	203	6	420	52
Washington	12	1	3	0	0	0	11	8	267	21	24	44	0	116	5	222	13
Area 3 Total	86	3	33	0	0	2	135	60	1097	70	277	405	1	535	18	904	99
Caroline	5	0	1	0	0	0	2	5	75	6	10	19	0	35	3	32	5
Cecil	3	2	9	0	0	0	0	7	159	4	21	70	0	119	0	105	18
Dorchester	2	0	0	0	0	0	0	3	133	6	17	22	0	39	0	73	24
Kent	2	0	1	0	0	0	2	1	50	0	5	9	0	20	0	9	1
Queen Anne's	5	0	1	0	0	0	3	4	81	2	5	14	0	36	0	42	5
Somerset	7	0	2	0	0	0	0	8	49	0	2	13	0	30	0	25	3
Talbot	3	0	2	2	1	0	3	5	68	8	5	22	0	37	0	45	14
Wicomico	21	0	7	1	0	0	13	8	339	18	10	67	0	89	1	232	18
Worcester	3	0	2	0	0	0	3	8	71	8	10	35	0	40	1	117	4
Area 4 Total	51	2	25	3	1	0	26	49	1025	52	85	271	0	445	5	680	92
Anne Arundel	37	2	20	2	0	1	92	23	786	32	151	223	0	400	14	694	191
Calvert	0	0	5	0	0	0	0	8	129	10	21	34	0	69	0	75	16
Charles	20	0	5	1	0	0	14	12	231	12	27	73	0	53	1	275	20
Prince George's	102	0	9	0	2	3	141	59	748	29	438	206	5	287	2	696	171
St. Mary's	7	1	6	0	0	0	3	3	138	12	19	49	0	91	0	97	14
Area 5 Total	166	3	45	3	2	4	250	105	2032	95	656	585	5	900	17	1837	412
Out of State	0	0	0	0	0	0	0	1	2	1	8	1	0	1	0	0	0
State Total	677	25	194	7	5	22	829	353	7447	417	2238	2184	23	3014	57	5126	1212

Table 24
Intake Cases by Alleged Offenses and County of Jurisdiction for Males
FY 2004

Area	ALCOHOL VIOLATION	GLUE SNIFFING & OTHER INHALANTS	NARCOTICS DISTRIBUTION	NARCOTICS POSSESSION	RUNAWAY	TRAUNCY	UNGOVERNABLE	BOMB THREAT	CONSPIRACY	DEADLY WEAPON	DISTURBING THE PEACE	ESCAPE	FALSE ALARM	FALSE REPORT	FIREWORKS VIOLATION	HANDGUN VIOLATIONS	HARRASSMENT	LOITERING
Baltimore City	20	0	2538	1103	9	5	87	6	26	222	503	0	3	13	4	48	5	425
Area 1 Total	20	0	2538	1103	9	5	87	6	26	222	503	0	3	13	4	48	5	425
Baltimore County	52	0	132	491	2	0	7	31	1	131	142	7	5	18	1	7	15	4
Carroll	87	0	17	100	15	7	4	2	2	22	2	1	2	4	9	1	8	0
Harford	47	0	44	182	0	0	0	9	1	51	40	0	1	11	2	0	4	0
Howard	99	0	40	128	1	0	0	4	3	41	46	0	0	6	5	3	5	0
Area 2 Total	285	0	233	901	18	7	11	46	7	245	230	8	8	39	17	11	32	4
Allegany	104	0	19	39	29	12	10	2	1	2	23	2	0	3	2	0	0	0
Frederick	34	0	30	127	29	19	15	5	0	16	29	3	0	1	5	0	2	0
Garrett	7	0	5	15	1	8	7	0	2	0	3	5	1	0	0	1	3	0
Montgomery	325	0	76	299	1	0	15	5	10	81	46	4	1	8	6	7	1	2
Washington	111	0	17	78	0	0	28	2	6	27	48	1	7	2	3	1	3	0
Area 3 Total	581	0	147	558	60	39	75	14	19	126	149	15	9	14	16	9	9	2
Caroline	9	0	5	32	19	0	0	0	0	5	23	1	0	2	0	2	1	0
Cecil	24	2	18	105	2	0	1	3	4	28	22	0	0	2	8	0	1	0
Dorchester	21	0	2	48	25	0	0	1	0	6	42	1	0	1	0	1	1	2
Kent	8	0	1	29	0	6	0	0	0	4	0	0	0	1	0	0	1	0
Queen Anne's	27	0	7	33	11	2	0	0	2	3	16	0	0	3	1	0	0	0
Somerset	8	0	3	8	3	0	0	0	0	2	6	0	1	3	0	0	1	0
Talbot	37	0	3	40	8	0	1	2	1	6	8	1	0	7	0	1	2	0
Wicomico	31	0	22	47	3	0	0	0	2	26	68	4	2	4	1	1	11	0
Worcester	280	0	16	151	8	0	0	4	0	10	47	0	1	2	0	0	0	0
Area 4 Total	445	2	77	493	79	8	2	10	9	90	232	7	4	25	10	5	18	2
Anne Arundel	80	0	83	395	0	0	1	5	1	101	175	1	4	15	7	4	23	14
Calvert	35	0	23	103	46	0	0	8	0	17	11	0	1	0	1	0	0	0
Charles	49	0	27	87	3	0	0	4	12	28	49	1	2	4	0	0	1	0
Prince George's	26	0	107	228	4	20	97	10	1	104	149	3	4	30	7	14	13	4
St. Mary's	37	0	13	69	5	1	0	5	0	11	27	0	0	2	4	0	0	0
Area 5 Total	227	0	253	882	58	21	98	32	14	261	411	5	11	51	19	18	37	18
Out of State	0	0	2	0	0	0	0	0	1	0	0	0	0	0	0	0	0	0
State Total	1558	2	3250	3937	224	80	273	108	76	944	1525	35	35	142	66	91	101	451

**Table 24
Intake Cases by Alleged Offenses and County of Jurisdiction for Males
FY 2004**

Area	OTHER FELONY	PAGER AT SCHOOL	RECKLESS ENDANGERMENT	TELEPHONE MISUSE	TOBACCO VIOLATIONS	MOTOR VEHICLE/ TRAFFIC VIOLATIONS	VIOLATION OF PROBATION	OTHER MISDEAMEANOR	OFFENSES NOT LINKED	JURISDICTION TOTAL
Baltimore City	11	0	7	0	0	92	125	208	49	9732
Area 1 Total	11	0	7	0	0	92	125	208	49	9732
Baltimore County	11	0	7	15	24	118	27	39	29	5175
Carroll	12	0	2	10	83	44	17	7	79	969
Harford	0	0	4	6	159	45	56	21	5	1582
Howard	1	0	3	2	32	63	4	8	0	1248
Area 2 Total	24	0	16	33	298	270	104	75	113	8974
Allegany	1	0	0	2	29	20	3	35	1	702
Frederick	2	0	5	4	121	54	76	14	2	1213
Garrett	1	0	0	0	22	3	0	4	3	200
Montgomery	10	0	2	2	71	311	20	77	11	3277
Washington	2	0	4	0	60	61	29	24	7	1268
Area 3 Total	16	0	11	8	303	449	128	154	24	6660
Caroline	0	0	1	0	17	4	1	7	8	335
Cecil	2	0	5	2	24	21	14	4	22	831
Dorchester	2	0	4	2	14	17	1	15	5	530
Kent	0	0	2	2	10	2	0	24	1	191
Queen Anne`s	0	0	1	1	17	11	3	4	1	341
Somerset	0	0	0	1	29	1	3	5	2	215
Talbot	4	0	0	0	13	16	0	2	0	367
Wicomico	4	0	3	0	55	11	2	32	2	1155
Worcester	1	0	6	0	92	24	6	95	3	1048
Area 4 Total	13	0	22	8	271	107	30	188	44	5013
Anne Arundel	4	0	20	16	82	114	8	53	7	3881
Calvert	1	0	1	3	5	29	0	9	2	662
Charles	2	0	4	3	94	32	22	12	8	1188
Prince George`s	32	0	8	1	31	46	3	42	15	3897
St. Mary`s	2	0	0	3	24	13	5	1	2	664
Area 5 Total	41	0	33	26	236	234	38	117	34	10292
Out of State	0	0	0	0	0	0	0	0	0	17
State Total	105	0	89	75	1108	1152	425	742	264	40688

Table 25
Intake Cases by Alleged Offenses and County of Jurisdiction for Females
FY 2004

Area	AGGRAVATED ASSAULT	CHILD ABUSE	GENERAL SEX	KIDNAPPING	MANSLAUGHTER	MURDER	ROBBERY	SEX FELONY	SIMPLE ASSAULT	ARSON FELONY/ MISDEMEANOR	AUTO THEFT/ UNAUTHORIZED USE	BURGLARY/B & E	CARJACKING	MALICIOUS DESTRUCTION	TAMPERING	THEFT/SHOPLIFTING	TRESPASSING
Baltimore City	109	0	2	1	0	4	26	1	745	30	94	37	0	79	0	95	51
Area 1 Total	109	0	2	1	0	4	26	1	745	30	94	37	0	79	0	95	51
Baltimore County	25	0	3	0	0	0	14	3	607	5	45	33	0	74	0	758	27
Carroll	6	0	0	0	0	0	0	0	56	1	7	9	0	13	0	69	13
Harford	5	0	0	0	0	0	0	0	171	1	6	13	0	15	1	98	14
Howard	2	1	0	0	0	0	2	0	104	3	18	7	0	12	0	78	12
Area 2 Total	38	1	3	0	0	0	16	3	938	10	76	62		114	1	1003	66
Allegany	2	1	0	0	0	0	0	0	55	0	0	10	0	14	2	55	2
Frederick	3	0	1	0	0	0	0	0	75	1	10	12	0	13	0	119	9
Garrett	0	0	0	0	0	0	0	0	10	0	0	0	0	2	3	8	1
Montgomery	10	0	1	0	0	0	3	1	226	2	36	30	0	18	0	226	8
Washington	2	0	0	0	0	0	1	0	129	1	7	2	0	13	0	69	0
Area 3 Total	17	1	2	0	0	0	4	1	495	4	53	54	0	60	5	477	20
Caroline	0	0	0	0	0	0	0	0	42	3	8	0	0	5	0	6	0
Cecil	2	0	0	0	0	0	0	1	79	1	3	21	0	17	0	47	7
Dorchester	1	0	0	0	0	0	0	0	76	0	2	2	0	12	0	22	3
Kent	0	0	0	0	0	0	0	0	33	0	4	2	0	2	0	5	0
Queen Anne's	2	0	0	0	0	0	0	1	38	1	2	6	0	4	0	8	0
Somerset	2	0	0	0	0	0	0	0	23	0	1	1	0	7	0	4	0
Talbot	2	0	0	0	0	0	0	0	33	0	0	3	0	7	0	22	2
Wicomico	5	1	2	0	0	0	2	0	208	1	2	12	0	27	0	125	8
Worcester	1	0	5	0	0	0	0	0	39	1	6	10	0	10	0	81	4
Area 4 Total	15	1	7	0	0	0	2	2	571	7	28	57		91	0	320	24
Anne Arundel	19	0	1	0	0	0	8	3	428	1	30	15	0	76	0	386	45
Calvert	2	0	0	0	0	0	0	1	56	1	7	0	0	13	0	19	0
Charles	8	1	0	0	0	0	0	1	110	0	3	11	1	13	0	137	2
Prince George's	14	0	0	0	0	2	13	3	257	8	63	14	0	36	1	215	55
St. Mary's	4	0	0	0	0	0	0	0	89	1	6	6	0	15	0	29	0
Area 5 Total	47	1	1	0	0	2	21	8	940	11	109	46	1	153	1	786	102
Out of State	0	0	0	0	0	0	0	0	2	0	1	0	0	0	0	0	0
State Total	226	4	15	1	0	6	69	15	3691	62	361	256	1	497	7	2681	263

**Table 25
Intake Cases by Alleged Offenses and County of Jurisdiction for Females
FY 2004**

Area	ALCOHOL VIOLATION	GLUE SNIFFING & OTHER INHALANTS	NARCOTICS DISTRIBUTION	NARCOTICS POSSESSION	RUNAWAY	TRAUCY	UNGOVERNABLE	BOMB THREAT	CONSPIRACY	DEADLY WEAPON	DISTURBING THE PEACE	ESCAPE	FALSE ALARM	FALSE REPORT	FIREWORKS VIOLATION	HANDGUN VIOLATIONS	HARRASSMENT	LOITERING
Baltimore City	8	0	175	106	4	2	64	2	2	81	215	0	1	6	0	5	2	24
Area 1 Total	8	0	175	106	4	2	64	2	2	81	215	0	1	6	0	5	2	24
Baltimore County	20	0	14	101	1	1	13	5	4	19	59	0	2	8	0	0	6	0
Carroll	50	0	2	14	24	6	14	0	4	4	7	0	2	2	1	0	2	0
Harford	22	0	3	34	0	0	0	0	1	8	23	1	1	6	0	0	1	0
Howard	57	0	5	35	3	0	0	0	0	3	21	0	0	2	0	0	5	0
Area 2 Total	149	0	24	184	28	7	27	5	9	34	110	1	5	18	1	0	14	0
Allegany	78	0	3	25	71	20	8	0	0	0	6	2	0	0	0	0	0	0
Frederick	17	0	4	37	40	16	8	0	0	2	16	0	1	3	0	0	3	0
Garrett	5	0	3	8	4	8	14	0	0	0	0	0	0	0	0	0	1	0
Montgomery	144	0	8	69	0	2	10	4	11	11	9	0	0	2	0	0	1	0
Washington	37	0	5	16	0	0	58	0	1	2	19	0	1	4	0	0	2	0
Area 3 Total	281	0	23	155	115	46	98	4	12	15	50	2	2	9	0	0	7	0
Caroline	0	0	0	6	32	0	0	0	0	1	4	0	0	0	0	0	3	0
Cecil	19	0	1	18	8	0	1	0	1	9	14	0	0	2	1	0	5	0
Dorchester	21	0	0	8	24	0	0	0	0	3	53	0	1	0	0	0	1	0
Kent	2	0	0	12	0	2	0	0	0	1	0	0	0	0	0	0	1	0
Queen Anne's	19	0	0	12	16	2	1	0	0	1	8	0	0	1	0	0	0	0
Somerset	2	0	0	2	6	0	2	1	0	0	2	0	0	0	0	0	1	0
Talbot	15	0	0	9	18	0	0	0	1	0	3	0	0	2	0	0	2	0
Wicomico	28	0	1	15	21	0	3	0	0	1	42	1	0	2	0	0	9	0
Worcester	153	0	1	27	13	2	2	3	0	1	17	0	0	0	0	0	1	0
Area 4 Total	259	0	3	109	138	6	9	4	2	17	143	1	1	7	1	0	23	0
Anne Arundel	34	0	9	87	0	0	4	4	0	17	61	3	4	7	0	2	20	0
Calvert	16	0	2	36	81	0	0	0	0	1	13	0	0	2	1	0	3	0
Charles	17	0	3	27	0	0	0	0	2	4	21	0	1	4	0	0	0	0
Prince George's	16	0	6	29	1	5	71	1	0	15	41	1	0	8	0	0	24	1
St. Mary's	24	0	2	12	16	0	0	2	0	1	14	0	0	1	0	0	0	0
Area 5 Total	107	0	22	191	98	5	75	7	2	38	150	4	5	22	1	2	47	1
Out of State	0	0	0	0	0	0	0	0	0	0	0	0	0	0	0	0	0	0
State Total	804	0	247	745	383	66	273	22	27	185	668	8	14	62	3	7	93	25

**Table 25
Intake Cases by Alleged Offenses and County of Jurisdiction for Females
FY 2004**

Area	OTHER FELONY	PAGER AT SCHOOL	RECKLESS ENDANGERMENT	TELEPHONE MISUSE	TOBACCO VIOLATIONS	MOTOR VEHICLE/TRAFFIC VIOLATIONS	VIOLATION OF PROBATION	OTHER MISDEAMEANOR	OFFENSES NOT LINKED	JURISDICTION TOTAL
Baltimore City	4	0	1	2	0	12	7	34	13	2044
Area 1 Total	4	0	1	2	0	12	7	34	13	2044
Baltimore County	6	0	0	18	7	36	10	11	2	1937
Carroll	1	0	1	9	59	11	7	1	31	426
Harford	0	0	0	3	64	12	17	3	0	523
Howard	1	0	1	6	18	17	0	0	1	414
Area 2 Total	8	0	2	36	148	76	34	15	34	3300
Allegany	1	0	0	0	24	10	1	4	4	398
Frederick	0	0	0	5	53	14	9	4	3	478
Garrett	0	0	0	1	3	1	0	1	0	73
Montgomery	11	0	0	5	22	34	3	41	2	950
Washington	1	0	0	1	29	9	3	4	4	420
Area 3 Total	13	0	0	12	131	68	16	54	13	2319
Caroline	0	0	0	2	8	4	0	1	3	128
Cecil	0	0	0	1	12	5	3	3	4	285
Dorchester	0	0	1	0	5	5	0	1	7	248
Kent	0	0	0	0	5	1	0	15	1	86
Queen Anne`s	0	0	0	1	5	4	1	2	1	136
Somerset	1	0	0	0	11	0	0	3	0	69
Talbot	0	0	0	0	6	6	0	0	0	131
Wicomico	0	0	0	0	26	7	0	4	0	553
Worcester	1	0	0	0	27	10	0	41	2	458
Area 4 Total	2	0	1	4	105	42	4	70	18	2094
Anne Arundel	0	0	5	11	33	39	1	13	1	1367
Calvert	0	0	0	3	2	9	0	6	1	275
Charles	3	0	1	2	50	7	7	1	1	438
Prince George`s	1	0	1	1	16	7	0	14	1	941
St. Mary`s	1	0	0	0	6	6	4	1	2	242
Area 5 Total	5	0	7	17	107	68	12	35	6	3263
Out of State	0	0	0	0	0	0	0	0	0	3
State Total	32		11	71	491	266	73	208	84	13023

Table 26
Alleged Offense Rates Per 1,000 Population by Offense Category & County of Jurisdiction
FY 2004

Area	11-17 Yrs. Population	Person-to-Person	Per 1,000 Population	Property	Per 1,000 Population	Alcohol	Per 1,000 Population	Narcotics	Per 1,000 Population	CINS	Per 1,000 Population	Other	Per 1,000 Population	County of Jurisdiction	County of Jurisdiction Per 1,000 Population
Baltimore City	57625	2882	50.0	2615	45.4	28	0.5	3922	68.1	171	3.0	2158	37.4	11776	204
Area 1 Total	57625	2882	50.0	2615	45.4	28	0.5	3922	68.1	171	3.0	2158	37.4	11776	204
Baltimore County	75713	2213	29.2	3240	42.8	72	1.0	738	9.7	24	0.3	825	10.9	7112	94
Carroll	17155	220	12.8	386	22.5	137	8.0	133	7.8	70	4.1	450	26.2	1396	81
Harford	23368	522	22.3	696	29.8	69	3.0	263	11.3	0	0.0	554	23.7	2104	90
Howard	29070	398	13.7	595	20.5	156	5.4	208	7.2	4	0.1	301	10.4	1662	57
Area 2 Total	145306	3353	23.1	4917	33.8	434	3.0	1342	9.2	98	0.7	2130	14.7	12274	84
Allegany	6015	217	36.1	287	47.7	182	30.3	86	14.3	150	24.9	178	29.6	1100	183
Frederick	22857	332	14.5	531	23.2	51	2.2	198	8.7	127	5.6	452	19.8	1691	74
Garrett	2691	55	20.4	78	29.0	12	4.5	31	11.5	42	15.6	55	20.4	273	101
Montgomery	92030	898	9.8	1549	16.8	469	5.1	452	4.9	28	0.3	831	9.0	4227	46
Washington	12587	434	34.5	537	42.7	148	11.8	116	9.2	86	6.8	367	29.2	1688	134
Area 3 Total	136180	1936	14.2	2982	14.2	862	6.3	883	6.5	433	3.2	1883	13.8	8979	66
Caroline	3071	130	42.3	132	43.0	9	2.9	43	14.0	51	16.6	98	31.9	463	151
Cecil	9900	262	26.5	433	43.7	43	4.3	142	14.3	12	1.2	224	22.6	1116	113
Dorchester	2860	215	75.2	222	77.6	42	14.7	58	20.3	49	17.1	192	67.1	778	272
Kent	1626	89	54.7	57	35.1	10	6.2	42	25.8	8	4.9	71	43.7	277	170
Queen Anne's	4336	135	31.1	125	28.8	46	10.6	52	12.0	32	7.4	87	20.1	477	110
Somerset	1750	91	52.0	86	49.1	10	5.7	13	7.4	11	6.3	73	41.7	284	162
Talbot	3101	119	38.4	165	53.2	52	16.8	52	16.8	27	8.7	83	26.8	498	161
Wicomico	8109	607	74.9	610	75.2	59	7.3	85	10.5	27	3.3	320	39.5	1708	211
Worcester	4208	132	31.4	327	77.7	433	102.9	195	46.3	25	5.9	394	93.6	1506	358
Area 4 Total	38961	1780	45.7	2157	55.4	704	18.1	682	17.5	242	6.2	1542	39.6	7107	182
Anne Arundel	47159	1422	30.2	2258	47.9	114	2.4	574	12.2	5	0.1	875	18.6	5248	111
Calvert	10342	201	19.4	265	25.6	51	4.9	164	15.9	127	12.3	129	12.5	937	91
Charles	15641	403	25.8	628	40.2	66	4.2	144	9.2	3	0.2	382	24.4	1626	104
Prince George's	84913	1353	15.9	2226	26.2	42	0.5	370	4.4	198	2.3	649	7.6	4838	57
St. Mary's	10364	251	24.2	339	32.7	61	5.9	96	9.3	22	2.1	137	13.2	906	87
Area 5 Total	168419	3630	21.6	5716	33.9	334	2.0	1348	8.0	355	2.1	2172	12.9	13555	80
State Total	546491	13586	24.9	18399	33.7	2362	4.3	8179	15.0	1299	2.4	9886	18.1	53711	98

Note: 1. FY 2004 11-17 years of age population projections are taken from "Public School Enrollment Projections 2004-2013" report prepared by Maryland Office of State Planning.
2. Total referrals exclude 20 out-of-state referrals.

Table 27
Rates of Total Delinquent Referrals Per 1,000 Youth Population
FY 2004

County of Residence	11-17years Population	Total Referrals	Per 1,000 population	Delinquent Referrals	Per 1,000 Population
Baltimore City	57625	11776	204.4	11577	201
Area 1 Total	57625	11776	204.4	11577	201
Baltimore County	75713	7112	93.9	6985	92
Carroll	17155	1396	81.4	1047	61
Harford	23368	2104	90.0	1812	78
Howard	29070	1662	57.2	1452	50
Area 2 Total	145306	12274	84.5	11296	78
Allegany	6015	1100	182.9	715	119
Frederick	22857	1691	74.0	1339	59
Garrett	2691	273	101.4	194	72
Montgomery	92030	4227	45.9	3637	40
Washington	12587	1688	134.1	1365	108
Area 3 Total	136180	8979	65.9	7250	53
Caroline	3071	463	150.8	378	123
Cecil	9900	1116	112.7	1025	104
Dorchester	2860	778	272.0	668	234
Kent	1626	277	170.4	244	150
Queen Anne`s	4336	477	110.0	377	87
Somerset	1750	284	162.3	223	127
Talbot	3101	498	160.6	400	129
Wicomico	8109	1708	210.6	1541	190
Worcester	4208	1506	357.9	929	221
Area 4 Total	38961	7107	182.4	5785	148
Anne Arundel	47159	5248	111.3	5014	106
Calvert	10342	937	90.6	752	73
Charles	15641	1626	104.0	1413	90
Prince George`s	84913	4838	57.0	4551	54
St. Mary`s	10364	906	87.4	793	77
Area 5 Total	168419	13555	80.5	12523	74
State Total	546491	53711	98.3	48451	89

Note: 1. FY 2004 11-17 years of age population projections are taken from "Public School Enrollment Projections 2004-2013" report prepared by Maryland Office of State Planning.
2. Total referrals exclude 20 out-of-state cases and total delinquent referrals exclude 20 out-of-state referrals.

Table 28
Court Dispositions of Formalized Cases by Gender
FY 2004

Court Dispositions	Number of Males	Percent of Males	Number of Females	Percent of Females	Jurisdiction Total	Percent Total
Probation/Probation to Parent/ Protective Supervision	4600	24.4	794	22.0	5394	24.0
Dismissed/Closed	3541	18.8	598	16.5	4139	18.4
Committed to DJJ for Placement	1932	10.3	170	4.7	2102	9.4
Continued Case/STET	2504	13.3	638	17.6	3142	14.0
Petition Denied by State Attorney	3301	17.5	772	21.3	4073	18.1
Jurisdiction waived	165	0.9	5	0.1	170	0.8
Inter Region/State	28	0.1	7	0.2	35	0.2
Nol Pros	440	2.3	124	3.4	564	2.5
Transfer	214	1.1	55	1.5	269	1.2
Writ Pending	462	2.5	95	2.6	557	2.5
Other	651	3.5	138	3.8	789	3.5
Disposition Pending	926	4.9	212	5.9	1138	5.1
Petition Withdrawn	69	0.4	9	0.2	78	0.3
State Total	18833	100.0	3617	100.0	22450	100.0

Table 29
Court Dispositions of Formalized Cases by Race
FY 2004

Court Dispositions	Number of African American	Percent Total African American	Number of White	Percent of White	Number of Other	Percent of Other	Jurisdiction Total	Percent Total
Probation/Probation to Parent/ Protective Supervision	2986	21.2	2144	28.4	264	32.4	5394	24.0
Dismissed/Closed	2981	21.2	1010	13.4	148	18.1	4139	18.4
Committed to DJJ for Placement	1363	9.7	664	8.8	75	9.2	2102	9.4
Continued Case/STET	1703	12.1	1347	17.8	92	11.3	3142	14.0
Petition Denied by State Attorney	2981	21.2	1001	13.2	91	11.2	4073	18.1
Jurisdiction waived	99	0.7	69	0.9	2	0.2	170	0.8
Inter Region/State	23	0.2	11	0.1	1	0.1	35	0.2
Nol Pros	253	1.8	287	3.8	24	2.9	564	2.5
Transfer from One Juris. To Another	180	1.3	87	1.2	2	0.2	269	1.2
Writ Pending	421	3.0	104	1.4	32	3.9	557	2.5
Others	329	2.3	432	5.7	28	3.4	789	3.5
Disposition Pending	704	5.0	379	5.0	55	6.7	1138	5.1
Petition Withdrawn	53	0.4	23	0.3	2	0.2	78	0.3
State Total	14076	100.0	7558	100.0	816	100.0	22450	100.0

Table 30
Court Dispositions by County of Jurisdiction
FY 2004

County of Jurisdiction	Jurisdiction Waived	Committed to DJJ for Placement	Probation/Probation to Parent/Protective Supervision	Dismissed/Closed	Continued Cases/STET	Petition Denied by State Attorney	Petition Withdrawn	Inter Region/State	Nol Pros	Transfer from one Jurisdiction to Another	Writ Pending	Others	Disposition Pending	Jurisdiction Total
Baltimore City	24	516	1320	1930	464	2368	18	0	3	11	31	65	142	6892
Area 1 Total	24	516	1320	1930	464	2368	18	0	3	11	31	65	142	6892
Baltimore	27	214	859	310	1453	56	1	0	308	107	76	100	263	3774
Carroll	1	63	152	10	62	104	1	1	34	2	0	29	26	485
Harford	13	107	218	79	30	35	5	2	10	7	1	122	22	651
Howard	0	10	173	106	90	149	1	0	0	21	1	29	6	586
Area 2 Total	41	394	1402	505	1635	344	8	3	352	137	78	280	317	5496
Allegany	0	16	85	69	6	51	0	1	33	1	1	39	1	303
Frederick	5	89	163	197	15	114	0	0	0	13	29	40	7	672
Garrett	0	5	10	9	0	9	2	0	0	3	0	0	0	38
Montgomery	9	222	540	432	122	180	1	0	10	29	115	71	171	1902
Washington	12	76	251	91	123	39	0	0	40	9	15	17	2	675
Area 3 Total	26	408	1049	798	266	393	3	1	83	55	160	167	181	3590
Caroline	6	16	54	14	0	27	0	0	14	0	0	12	4	147
Cecil	15	64	68	82	60	104	3	0	5	1	32	1	23	458
Dorchester	2	16	15	19	14	58	0	0	0	1	0	1	16	142
Kent	1	8	26	21	0	12	0	0	0	0	0	1	1	70
Queen Anne's	4	30	23	15	5	22	0	0	0	3	2	8	1	113
Somerset	6	7	19	16	8	12	0	0	4	0	0	3	2	77
Talbot	3	23	55	32	0	23	2	0	2	5	0	7	3	155
Wicomico	3	31	65	6	57	205	0	0	52	1	2	3	12	437
Worcester	15	22	72	14	13	4	1	1	4	4	6	0	17	173
Area 4 Total	55	217	397	219	157	467	6	1	81	15	42	36	79	1772
Anne Arundel	11	141	360	225	364	200	0	2	0	39	2	142	259	1745
Calvert	0	37	168	4	59	62	0	0	33	1	8	10	1	383
Charles	3	154	133	31	40	8	43	0	0	2	5	31	5	455
Prince George's	10	194	426	416	115	168	0	21	1	9	231	52	149	1792
St. Mary's	0	41	136	3	42	61	0	0	11	0	0	6	5	305
Area 5 Total	24	567	1223	679	620	499	43	23	45	51	246	241	419	4680
Out of State	0	0	3	8	0	2	0	7	0	0	0	0	0	20
State Total	170	2102	5394	4139	3142	4073	78	35	564	269	557	789	1138	22450